



PARTS CATALOG

Published

2011/11 (Nov.)

0CNP3-G30700

Directions for the Parts Catalog.

- The parts stipulated in this Parts Catalog are not necessarily standard equipped parts.
- Parts may change without prior notice.
- The following is an example of the Parts Catalog format.

OCF10-G21601 29. FUEL INJECTION PUMP(W/BOOST)

REF.	LEV.	PARTS NO.	DESCRIPTION	Q'TY						I	R
				(A)	(B)	(C)	(D)	(E)	(F)		
1	1	729595-51390	FUEL INJECTION PUMP	1	1	1	1	1			1
1-1	1	729595-51391	FUEL INJECTION PUMP	1	1	1	1	1		N	1
		(A=E00185) (B=E00200)									
3	2	26022-060162	SCREW M 6X 16	9	9	9	9	9			
3-1	2	26022-060162	SCREW M 6X 16	4	4	4	4	4		K	
		(A=E00156) (B=E00156) (C=E00156) (D=E00156) (E=E00156)									
4	2	129470-51040	CAMSHAFT	1	1	1	1	1			
5	2	122710-51050	BEARING, ROLLER	2	2	2	2	2			
6	2	129470-51060	RETAINER	1	1	1	1	1			

Remarks

(1) BOOST COMPEMSATOR TYPE. OPTIONAL PART, TO E00155,(4JH-DT, 4JH-DTZ

① Ref. No.

The Ref. No. listed may not be in accordance with the illustration Ref. No.

(Ex.) Illustration No.

List Ref No.

1

1

(Before change)

1-1

(After change)

For interchangeable symbols N, R and K, illustrations for new parts may be abbreviated.

② Lev. (Level)

Level indication

The numbers below indicate the level of relativity towards the main part.

1 ----- Main parts (Assembly parts)

2 ----- Sub component included in " 1 ".

3 ----- Sub component included in " 2 ".

Note) Parts that are not for sale are partially illustrated but not listed.

③ Interchangeability Mark

When a part change takes place, one of the following interchangeability symbols is indicated beside the part.

Symbol	Interchangeability	Contents note
N	Old $\begin{matrix} \leftarrow \text{Yes} \\ \text{No} \rightarrow \end{matrix}$ New	New Part is interchangeable for Old Part but Old Part is not interchangeable for New Part.
Q	Old $\begin{matrix} \leftarrow \text{No} \\ \text{Yes} \rightarrow \end{matrix}$ New	New Part is not interchangeable for Old Part but Old Part is interchangeable for New Part.
R	Old $\begin{matrix} \leftarrow \text{Yes} \\ \text{Yes} \rightarrow \end{matrix}$ New	New/ Old Parts are both interchangeable.
S	Old $\begin{matrix} \leftarrow \text{No} \\ \text{No} \rightarrow \end{matrix}$ New	New/ Old Parts are both not interchangeable.
W		Part newly added.
Z		Part discontinued.
F		Not interchangeable by a single part but interchangeable together with related parts.
K		Changes only for used parts quantities.

④ Effective Machine No.

When a part changes, the effective Machine No. will be indicated in the (A)-(F) column.

Product Symbol	Product No.	Product Symbol	Product No.
C	Clutch No. Compressor No.	F	Machine No. (Agricultural Equip.)
D	Drive No.	M	Machine No.
E	Engine No.		

Note 1) A date may follow the symbol. (Ex.) 1996.01

Note 2) "XXXXX" and "ZZZZZ" are for parts that could not be predicted or for engine models that could not be identified.

Note 3) (A=E00185) is the E (Engine Serial Number) for the column (A) model (in this case 4JH-DT) after the parts design change.

⑤ Remarks Mark

Figures or alphabets (symbols) are entered in the remarks column.

The comments (remarks) on parts that are indicated at the bottom of the illustration are the same symbols as those stated above.

CONTENTS

MODEL : MCG8 ()
PC NO : 0CNP3-G30700

Fig.No. GROUP NAME

ENGINE SECTION

1. CYLINDER BLOCK
2. CYLINDER HEAD & BONNET
3. TOOL & LABEL
4. LABEL(SAFETY)
5. AIR CLEANER & MUFFLER
6. CRANKSHAFT,PISTON & CAMSHAFT
7. FUEL TANK & FUEL LINE
8. CARBURETOR
9. GOVERNOR & CONTROL DEVICE
10. FLYWHEEL MAG.& STARTING DEVICE

PULLEY & TENSION SECTION

11. TENSION ARM
12. PULLEY

FRAME SECTION

13. BODY FRAME

TRAVELING SECTION (1)

14. IDLER
15. TRACK ROLLER

CONTROL SECTION

16. HANDLE
17. TRAVEL CLUTCH LEVER
18. BRAKE LEVER
19. MAIN CHANGE LEVER
20. SIDE CLUTCH LEVER

Fig.No. GROUP NAME

PLATFORM CARRIER SECTION

21. PLATFORM CARRIER

TOOLS,ACCESSORIES & LABELS SECTION

22. LABELS
23. LABEL(SAFETY)
24. TOOLS & ACCESSORIES
33. LABEL(ADD.ITEM)

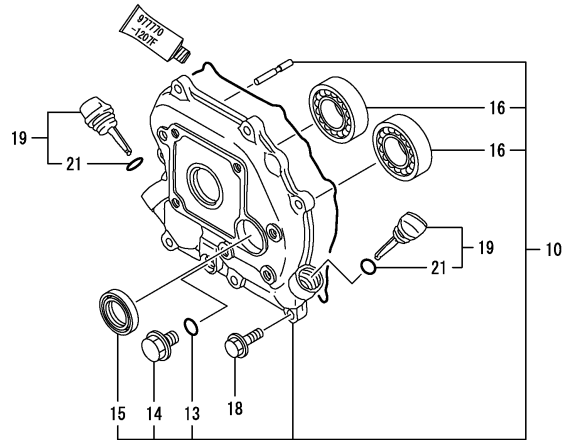
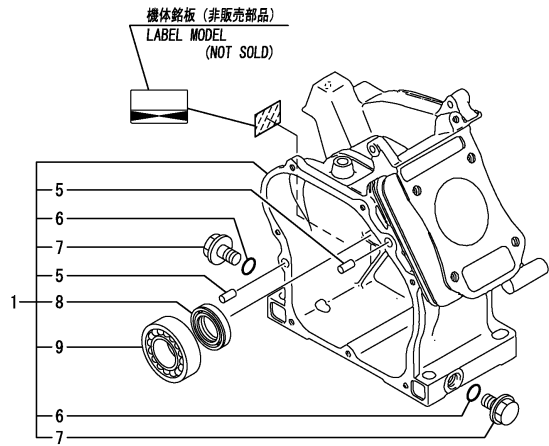
TRAVELING SECTION (2)

25. TRANSMISSION CASE
26. MAIN SHAFT
27. TRANSMISSION SHAFT B
28. TRANSMISSION SHAFT C
29. AXLE
30. BRAKE
31. SIDE CLUTCH
32. MAIN CHANGE

OPTIONAL SECTION

34. MULTI DOZER(ADD.ITEM)

Fig.1. CYLINDER BLOCK



OCNP3-G30700 1. CYLINDER BLOCK

(A)=GA90SCK

(B)=

(C)=

(D)=

(E)=

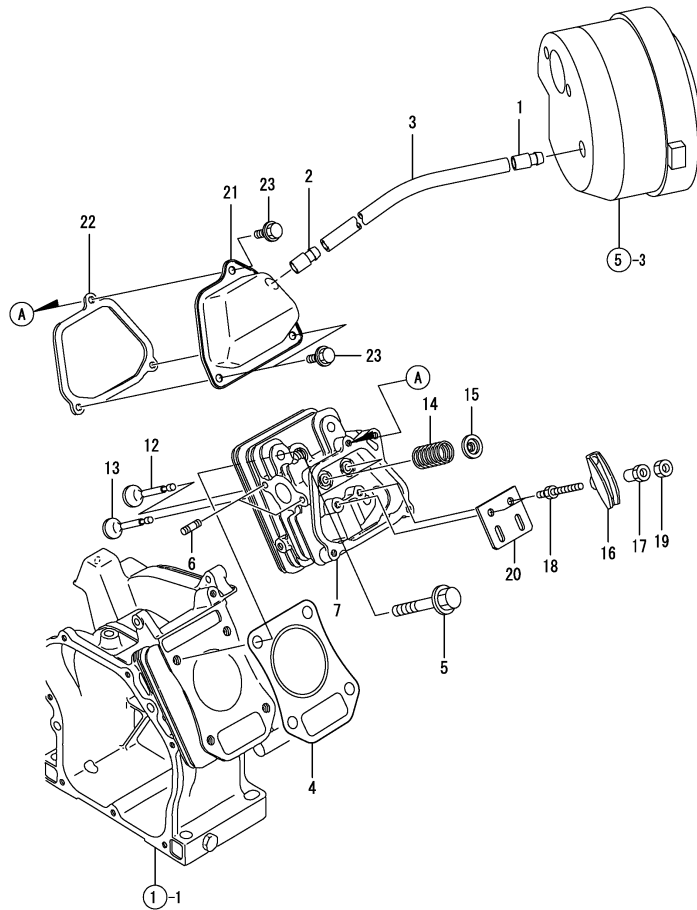
(F)=

REF.	LEV.	PARTS NO.	DESCRIPTION	Q'TY						I	R
				(A)	(B)	(C)	(D)	(E)	(F)		
1	1	760490-01561	BLOCK ASSY, CYLINDER	1							
I	1-1	760490-01562	BLOCK ASSY, CYLINDER	1							F 1
		(A=E121181)									
5	2	114270-01600	PARALLEL PIN 8X12	2							
6	2	24311-000100	O-RING 1A P-10.0	2							
7	2	26106-100162	BOLT M10X 16 PLATED	2							
8	2	160510-02220	SEAL, OIL	1							
9	2	24101-062030	BALL BEARING	1							
10	1	760490-01500	COVER, CRANKCASE	1							
13	2	24311-000100	O-RING 1A P-10.0	1							
14	2	26106-100162	BOLT M10X 16 PLATED	1							
15	2	160510-02220	SEAL, OIL	1							
16	2	24101-062030	BALL BEARING	2							
18	1	26476-060202	BOLT M 6X 20,TAPPING	7							
19	1	160611-01740	CAP ASSY	2							
21	2	24311-000150	O-RING 1A P-15.0	2							

Remarks

(1) REF.NO.1-1 & FIG.2 REF.NO.4-1
 INTERCHANGEABLE BY SET.
 (REMARKS)"EFFECTIVE MACHINE NO." OF
 ENGINE IS INDICATED ON THE
 ENGINE LABEL WHICH IS SHOWN
 IN FIG.1 OR 10.

Fig.2. CYLINDER HEAD & BONNET



0CNP3-G30700 2. CYLINDER HEAD & BONNET

(A)=GA90SCK

(B)=

(C)=

(D)=

(E)=

(F)=

REF.	LEV.	PARTS NO.	DESCRIPTION	QTY						I	R
				(A)	(B)	(C)	(D)	(E)	(F)		
1	1	160520-03050	BREATHER.MT.	1							
2	1	160610-03050	BREATHER ASSY	1							
3	1	160510-03180	PIPE, BREATHER	1							
4	1	160490-01330	GASKET	1							
I 4-1	1	160498-01330	GASKET, CYL. HEAD	1							F 1
(A=E121181)											
5	1	160610-04201	BOLT M 8X 53	4							
6	1	160610-04620	BOLT M6X 16	2							
7	1	160490-11010	HEAD ASSY, CYLINDER	1							
12	1	160664-11100	INLET VALVE	1							
13	1	160664-11110	EXHAUST VALVE	1							
14	1	160490-11120	SPRING, VALVE	2							
15	1	160664-11180	RETAINER, VALVE	2							
16	1	160690-11200	ARM, ROCKER	2							
I 16-1	1	160699-11200	ARM,VALVE ROCKER	2							F 2
(A=E121181)											
17	1	160690-11220	PIVOT, ROCKER ARM	2							
I 17-1	1	160690-11221	PIVOT,ROCKER ARM	2							R
(A=E168702)											
18	1	160690-11271	BOLT	2							
19	1	160690-11280	NUT M6X 0.5	2							
20	1	160490-11290	GUIDE PLATE	1							
21	1	160490-11300	BONNET	1							
22	1	160490-11310	GASKET, BONNET	1							
23	1	26476-060142	BOLT M 6X 14,TAPPING	3							

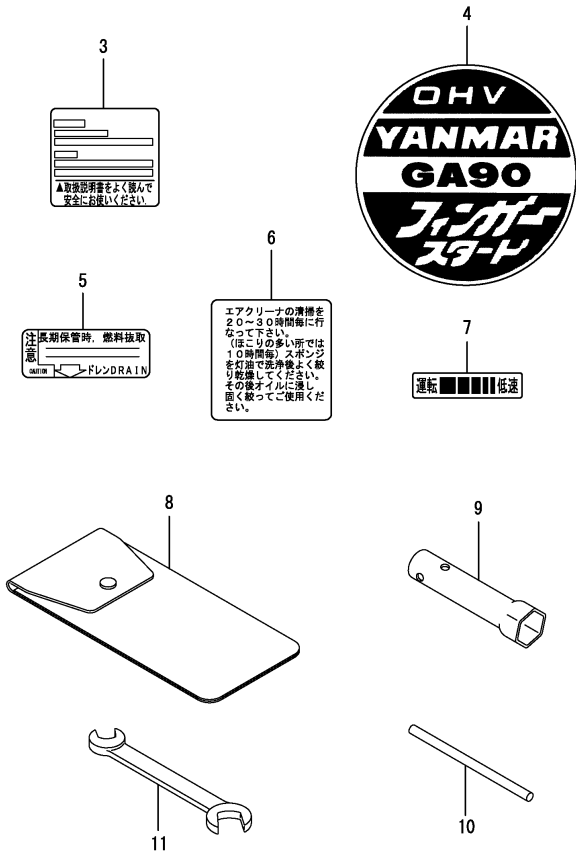
Remarks

(1) REF.NO.4-1 & FIG.1, REF.NO.1-1
INTERCHANGEABLE BY SET.

(2) REF.NO.16-1 & FIG.6, REF.NO.1-1
INTERCHANGEABLE BY SET.

(REMARKS)"EFFECTIVE MACHINE NO." OF
ENGINE IS INDICATED ON THE
ENGINE LABEL WHICH IS SHOWN
IN FIG.1 OR 10.

Fig.3. TOOL & LABEL



0CNP3-G30700 3. TOOL & LABEL

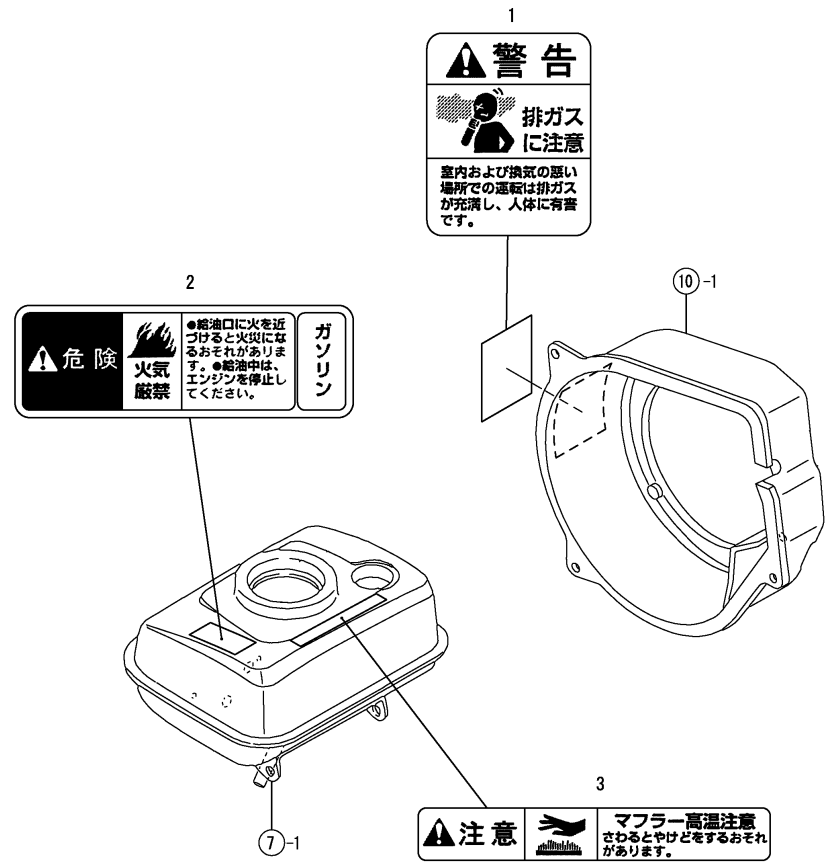
(A)=GA90SCK
(B)=
(C)=

(D)=
(E)=
(F)=

REF.	LEV.	PARTS NO.	DESCRIPTION	Q'TY						I	R
				(A)	(B)	(C)	(D)	(E)	(F)		
3	1	160692-07250	LABEL, CAUTION	1							
4	1	160490-07120	LABEL, OHV MARK	1							
I 4-1	1	160490-07130	LABEL, FINGER START	1							N
			(A=E138613)								
5	1	160520-07272	LABEL, DRAIN	1							
I 5-1	1	160690-07260	LABEL, DRAIN	1							R
			(A=E138613)								
6	1	160520-07370	LABEL, CLEANER	1							
I 7	1	183730-07440	LABEL, OPERATION	1							Z
			(A=E127133)								
8	1	160110-92610	BAG, TOOL	1							
9	1	160120-92700	SPANNER, BOX	1							
10	1	160110-92710	BAR	1							
11	1	28110-100120	WRENCH 10X12	1							

Remarks
(REMARKS)"EFFECTIVE MACHINE NO." OF
ENGINE IS INDICATED ON THE
ENGINE LABEL WHICH IS SHOWN
IN FIG.1 OR 10.

Fig.4. LABEL(SAFETY)



0CNP3-G30700 4. LABEL(SAFETY)

(A)=GA90SCK

(B)=

(C)=

(D)=

(E)=

(F)=

REF.	LEV.	PARTS NO.	DESCRIPTION	Q'TY						I	R
				(A)	(B)	(C)	(D)	(E)	(F)		
1	1	1A2260-87100	WARNING,EXH.GAS	1							
2	1	1A2100-86500	DANGER,FIRE PROHIBIT	1							
3	1	1E5120-86720	CAUTION,MUFFLER	1							

Remarks

(REMARKS)"EFFECTIVE MACHINE NO." OF ENGINE IS INDICATED ON THE ENGINE LABEL WHICH IS SHOWN IN FIG.1 OR 10.

Fig.5. AIR CLEANER & MUFFLER

(A)=GA90SCK

(B)=

(C)=

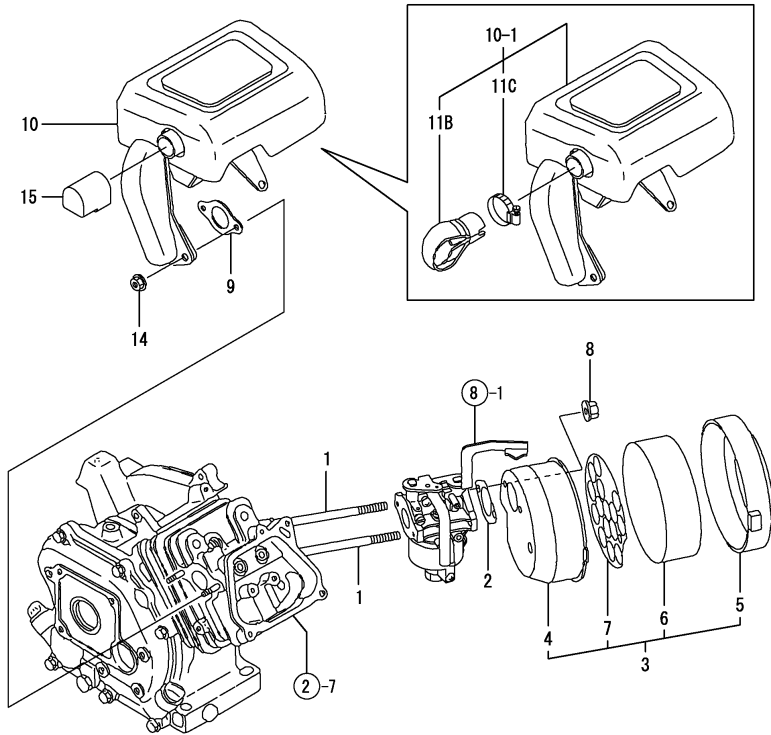
(D)=

(E)=

(F)=

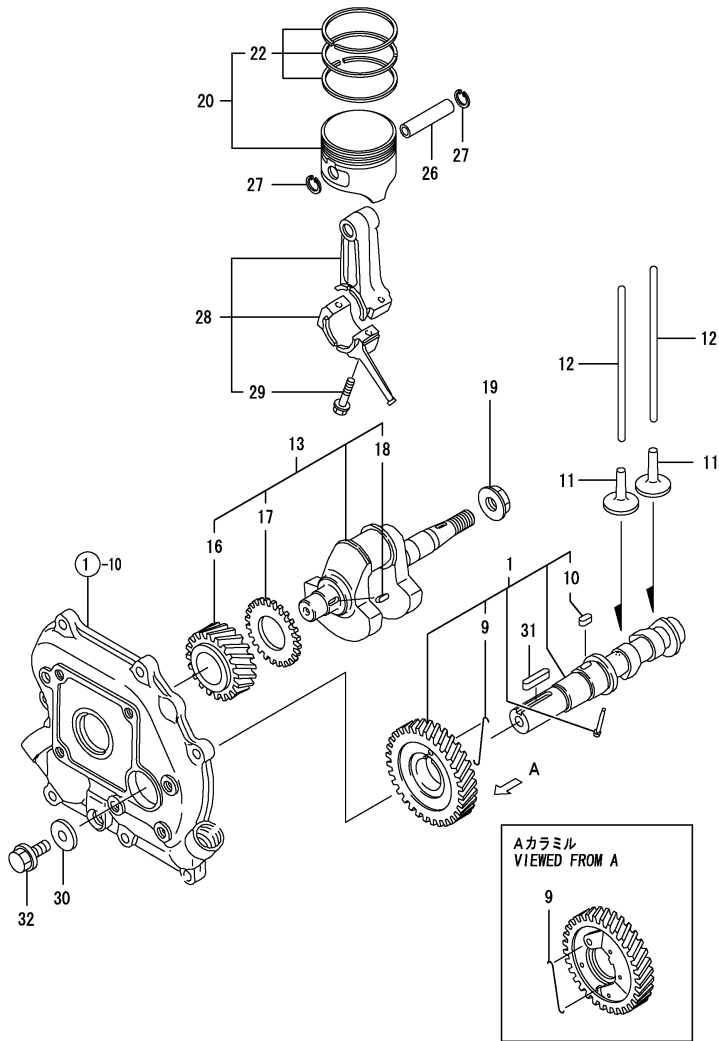
Q'TY

REF.	LEV.	PARTS NO.	DESCRIPTION	Q'TY						I	R
				(A)	(B)	(C)	(D)	(E)	(F)		
1	1	160610-04570	BOLT	2							
1-1	1	160790-04600	BOLT	2							N
(A=E121181)											
1-2	1	160690-04610	STUD	2							N
(A=E121181)											
1-3	1	26226-060752	STUD M 6X 75	2							N
(A=E121181)											
2	1	160762-12050	GASKET	2							
2-1	1	160492-12050	GASKET	2							R
(A=E121181)											
3	1	160490-12500	AIR CLEANER ASSY	1							
4	2	160490-12520	BODY	1							
5	2	160610-12530	CAP	1							
6	2	160610-12540	ELEMENT	1							
7	2	160610-12550	HOLDER	1							
8	1	26366-060002	NUT M 6	2							
9	1	160510-13200	GASKET	1							
10	1	160490-13560	MUFFLER ASSY	1							
10-1	1	160498-13570	MUFFLER ASSY	1							R
(A=E121181)											
11B	2	160490-13770	DEFLECTOR	1							W
(A=E121181)											
11C	2	171008-03990	CLIP	1							W
(A=E121181)											
11C-1	2	160490-13790	CLAMP	1							N
(A=E121181)											
14	1	26366-060002	NUT M 6	2							
14-1	1	114250-12300	NUT	2							N
(A=E121181)											
15	1	160321-13770	PIPE	1							Z
(A=E121181)											



Remarks
 (REMARKS)"EFFECTIVE MACHINE NO." OF
 ENGINE IS INDICATED ON THE
 ENGINE LABEL WHICH IS SHOWN
 IN FIG.1 OR 10.

Fig.6. CRANKSHAFT,PISTON & CAMSHAFT



0CNP3-G30700 6. CRANKSHAFT,PISTON & CAMSHAFT

(A)=GA90SCK

(B)=

(C)=

(D)=

(E)=

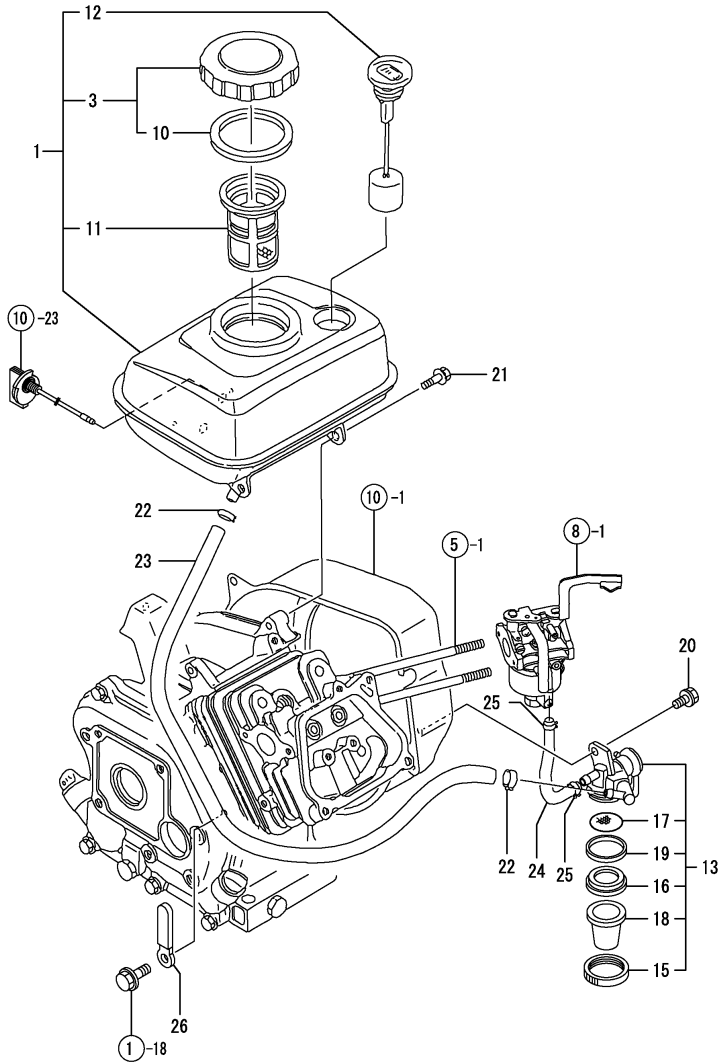
(F)=

REF.	LEV.	PARTS NO.	DESCRIPTION	Q'TY						I	R
				(A)	(B)	(C)	(D)	(E)	(F)		
1	1	160490-14050	CAMSHAFT ASSY	1							
I	1-1	160498-14050	CAMSHAFT ASSY	1							F 1
(A=E121181)											
9	2	160611-14560	SPRING	1							
10	2	114250-21290	KEY 4X 7	1							
11	1	160490-14200	TAPPET	2							
12	1	160490-14400	ROD,PUSH	2							
13	1	760490-21700	CRANKSHAFT ASSY	1							
16	2	160530-21200	GEAR, CRANKSHAFT	1							
17	2	160590-21210	GEAR, IDLE	1							
18	2	160610-21290	KEY 4X 10	1							
19	1	26376-120002	U-NUT M12	1							
20	1	160490-22010	PISTON ASSY	1							
22	2	760490-22500	RING SET, PISTON	1							
26	1	160490-22300	PIN, PISTON	1							
27	1	22252-000120	CIRCLIP 12	2							
28	1	160490-23030	ROD ASSY, CONNECTING	1							
29	2	26106-060302	BOLT M 6X 30 PLATED	2							
30	1	160510-14550	WASHER	1							
31	1	160810-21290	KEY 4X24	1							
32	1	26106-060162	BOLT M 6X 16 PLATED	1							

Remarks

(1) REF.NO.1-1 & FIG.2 REF.NO.16-1
 INTERCHANGEABLE BY SET.
 (REMARKS)"EFFECTIVE MACHINE NO." OF
 ENGINE IS INDICATED ON THE
 ENGINE LABEL WHICH IS SHOWN
 IN FIG.1 OR 10.

Fig.7. FUEL TANK & FUEL LINE



0CNP3-G30700 7. FUEL TANK & FUEL LINE

(A)=GA90SCK

(B)=

(C)=

(D)=

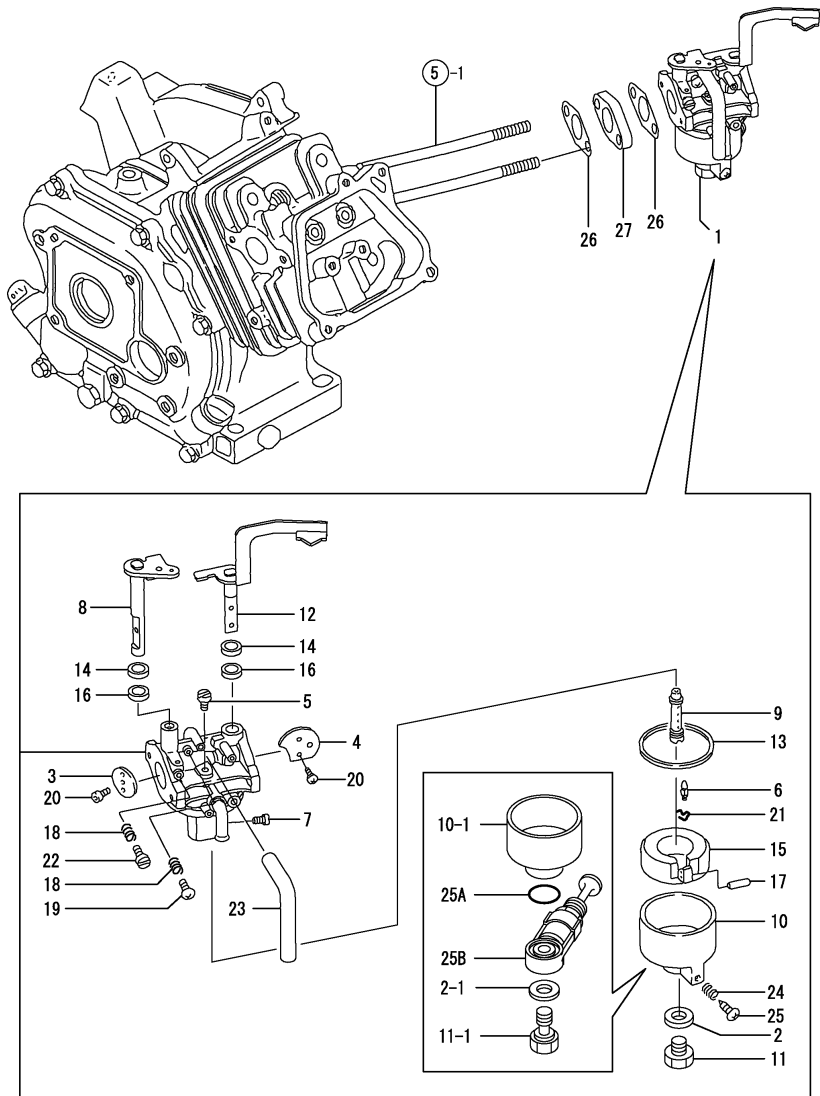
(E)=

(F)=

REF.	LEV.	PARTS NO.	DESCRIPTION	QTY						I	R	
				(A)	(B)	(C)	(D)	(E)	(F)			
I	1	1	760490-55700	TANK,FUEL (WHITE:14)	1							
	3	2	160710-55061	CAP ASSY, FUEL TANK	1							
	10	3	160393-55050	GASKET, TANK CAP	1							
	11	2	160610-55100	STRAINER	1							
	12	2	160708-55150	GAUGE, FUEL	1							
	13	1	160692-55300	COCK ASSY, FUEL	1							
	15	2	160710-55360	RING	1							
	16	2	160710-55370	GASKET	1							
	17	2	160710-55381	STRAINER, FUEL	1							
I	17-1	2	160710-55382	FILTER	1							N
			(A=E XXX)									
	18	2	160710-55390	CUP	1							
I	19	2	160692-55421	PLATE	1							Z
			(A=E XXX)									
	20	1	26106-060102	BOLT 6X 10 PLATED	1							
	21	1	26476-060142	BOLT M 6X 14,TAPPING	3							
	22	1	106990-44660	CLIP,HOSE	2							
	23	1	160490-59350	HOSE, FUEL (A-340)	1							
	24	1	160490-59360	HOSE, FUEL (B-145)	1							
	25	1	124060-77680	CLAMP 10	2							
	26	1	160260-78700	CLAMP, CORD	1							

Remarks
 (REMARKS)"EFFECTIVE MACHINE NO." OF
 ENGINE IS INDICATED ON THE
 ENGINE LABEL WHICH IS SHOWN
 IN FIG.1 OR 10.

Fig.8. CARBURETOR



0CNP3-G30700 8. CARBURETOR

(A)=GA90SCK
(B)=
(C)=

(D)=
(E)=
(F)=

REF.	LEV.	PARTS NO.	DESCRIPTION	QTY						I	R
				(A)	(B)	(C)	(D)	(E)	(F)		
1	1	160490-56011	CARBURETOR ASSY	1							
I	1-1	160491-56010	CARBURETOR COMPL.	1							N
(A=E127133)											
2	2	160495-56600	GASKET	1							
I	2-1	160802-56480	GASKET	1							S
(A=E127133)											
3	2	160492-56520	VALVE,THROTTLE	1							
4	2	160492-56530	VALVE	1							
5	2	160492-56540	JET, PILOT	1							
6	2	160492-56550	NEEDLE	1							
7	2	160495-56561	JET, MAIN	1							
8	2	160492-56570	SHAFT ASSY, THROTTLE	1							
9	2	160492-56581	NOZZLE, MAIN	1							
10	2	160490-56590	BODY,FLOAT	1							
I	10-1	160492-56590	BODY, FLOAT	1							S
(A=E127133)											
11	2	160490-56600	BOLT	1							
I	11-1	160492-56600	BOLT M5	1							S
(A=E127133)											
12	2	160492-56610	SHAFT, CHOKE	1							
13	2	160510-56610	GASKET	1							
14	2	160492-56620	GASKET	2							
15	2	160510-56620	FLOAT ASSY	1							
16	2	160492-56630	SEAL	2							
17	2	160610-56630	PIN, FLOAT	1							
18	2	181130-56640	SPRING	2							
19	2	160692-56710	SCREW	1							
20	2	160710-56710	SCREW	3							
21	2	160769-56720	CLAMP	1							
22	2	160667-56750	SCREW, ADJUSTING	1							
23	2	160692-56770	HOSE	1							
I	24	181230-56380	SPRING	1							Z
(A=E127133)											
I	25	160610-56900	SCREW	1							Z
(A=E127133)											
I	25A	160692-56620	O-RING	1							W
(A=E127133)											
I	25B	160692-56760	BODY, COCK	1							W
(A=E127133)											
26	1	160667-56150	GASKET, CARBURETOR	2							
27	1	160667-56160	SPACER, CARBURETOR	1							

Remarks
(REMARKS)"EFFECTIVE MACHINE NO." OF ENGINE IS INDICATED ON THE ENGINE LABEL WHICH IS SHOWN IN FIG.1 OR 10.

Fig.9. GOVERNOR & CONTROL DEVICE

(A)=GA90SCK

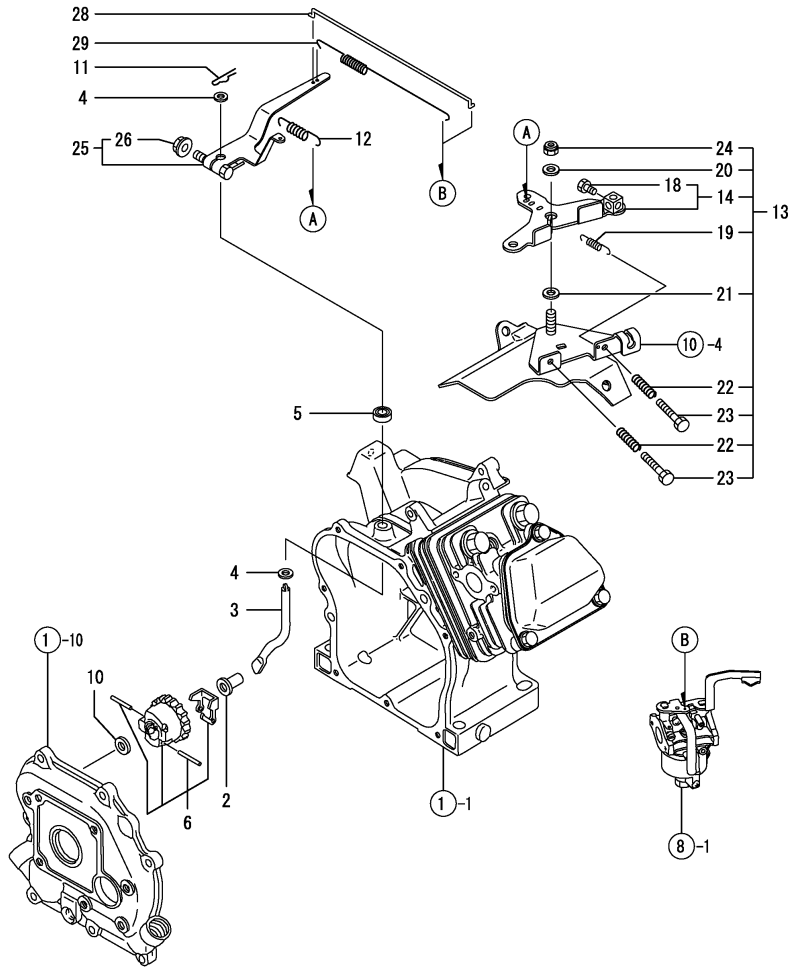
(B)=

(C)=

(D)=

(E)=

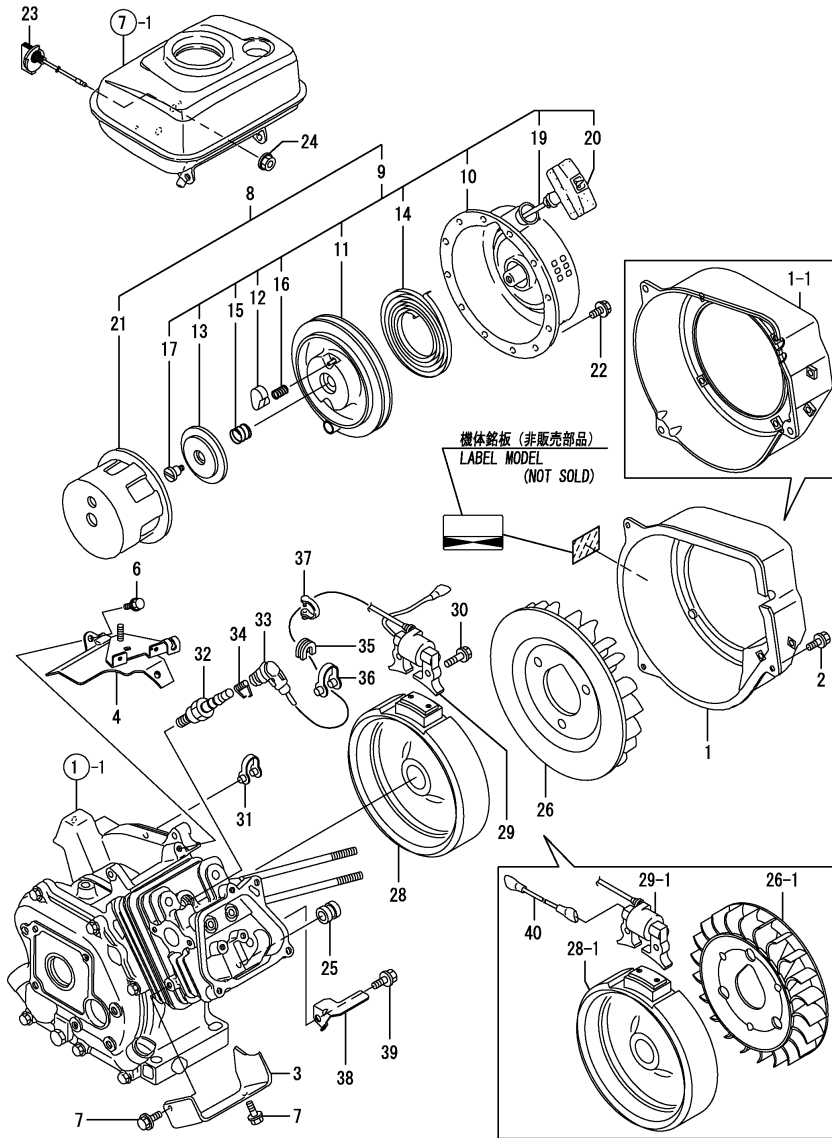
(F)=



REF.	LEV.	PARTS NO.	DESCRIPTION	QTY						I	R
				(A)	(B)	(C)	(D)	(E)	(F)		
2	1	160690-61301	SPINDLE, GOVERNOR	1							
3	1	160690-61310	SHAFT, GOV. LEVER	1							
I 3-1	1	160690-61311	SHAFT, GOV. LEVER	1							R
(A=E121181)											
4	1	160690-61450	WASHER	2							
5	1	114770-61600	SEAL, OIL	1							
6	1	160690-61600	GEAR ASSY, GOV.	1							
10	1	160120-76940	WASHER	1							
11	1	22372-080000	SNAP PIN (JASO 8)	1							
12	1	160490-66020	SPRING	1							
13	1	160492-66100	CONTROL ASSY	1							
14	2	160692-66051	LEVER ASSY, CONTROL	1							
18	3	26117-040088	BOLT M 4X 8 PLATED	1							
19	2	160664-66220	SPRING, RETURN	1							
20	2	160670-66350	COLLAR	1							
21	2	160120-76940	WASHER	1							
22	2	160520-66291	SPRING	2							
23	2	26117-040257	BOLT M 4X 25	2							
24	2	26347-060002	U-NUT M 6	1							
25	1	160490-66190	LEVER, GOVERNOR	1							
26	2	26366-060002	NUT M 6	1							
28	1	160490-66200	LINK, THROTTLE	1							
29	1	160490-66211	SPRING	1							

Remarks
 (REMARKS)"EFFECTIVE MACHINE NO." OF
 ENGINE IS INDICATED ON THE
 ENGINE LABEL WHICH IS SHOWN
 IN FIG.1 OR 10.

Fig.10. FLYWHEEL MAG.& STARTING DEVICE



Remarks
(REMARKS)"EFFECTIVE MACHINE NO." OF
ENGINE IS INDICATED ON THE
ENGINE LABEL WHICH IS SHOWN
IN FIG.1 OR 10.

(A)=GA90SCK
(B)=
(C)=

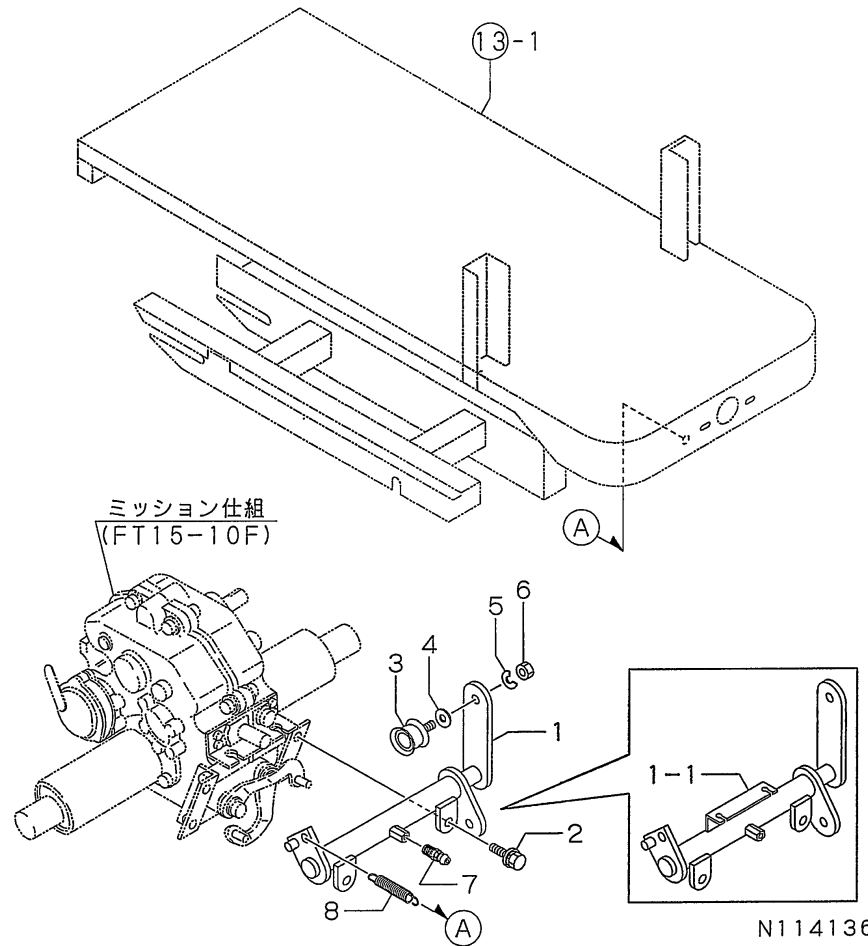
(D)=
(E)=
(F)=

REF.	LEV.	PARTS NO.	DESCRIPTION	QTY						I	R
				(A)	(B)	(C)	(D)	(E)	(F)		
1	1	160490-45110-1	CASE,FAN	1							
I	1-1	160490-45140	CASE, FAN (WHITE:14)	1							S
(A=E121181)											
2	1	26476-060142	BOLT M 6X 14,TAPPING	3							
3	1	160490-45200	COVER	1							
I	3-1	160490-45230	COVER, CYLINDER	1							N
(A=E121181)											
4	1	160490-45220	HEAD, CYLINDER	1							
6	1	26476-060142	BOLT M 6X 14,TAPPING	2							
7	1	26476-060142	BOLT M 6X 14,TAPPING	2							
8	1	160490-76051	STARTER ASSY, RECOIL	1							
9	2	160490-76251	RE-COIL STARTER	1							
10	3	160490-76611	CASE ASSY, STARTER	1							
11	3	160490-76511	REEL	1							
I	12	160690-76801	RATCHET	1							
13	3	160690-76531	GUIDE, RATCHET	1							
14	3	160690-76540	SPRING, SPIRAL	1							
15	3	160690-76561	SPRING, FRICTION	1							
16	3	160690-76570	SPRING, RETURN	2							
17	3	160690-76580	PLATE, FRICTION	1							
19	3	160490-76580	ROPE, STARTER	1							
20	3	160490-76600	KNOB, STARTER	1							
21	2	160490-76591	PULLEY, STARTER	1							
22	1	26106-060082	BOLT M 6X 8 PLATED	4							
23	1	160611-77250	SWITCH, STOP	1							
24	1	26366-080002	NUT M 8	1							
I	25	160341-01950	PIPE	1							Z
(A=E121181)											
26	1	160525-45010	FAN	1							
I	26-1	160490-45010	FAN, COOLING	1							S
(A=E121181)											
I	28	160490-78500	ROTOR	1							
I	28-1	160490-78540	ROTOR	1							S
(A=E121181)											
I	29	160490-78510	COIL, IGNITION	1							
I	29-1	160490-78550	COIL,LIGHTING	1							S
(A=E121181)											
30	1	26476-060302	BOLT M 6X 30,TAPPING	2							
31	1	29610-000650	CLAMP, SPEED 065	2							
32	1	160690-78020	PLUG, SPARK	1							
33	1	160700-78040	CAP, PLUG	1							
34	1	160700-78050	TERMINAL, PLUG	1							
35	1	160700-78720	GROMMET	1							
36	1	29610-000950	CLAMP, SPEED 095	1							
37	1	29610-001400	CLAMP	1							
I	38	160490-45240	GUIDE,COOLING AIR	1							W
(A=E121181)											
I	39	26476-060142	BOLT M 6X 14,TAPPING	1							W
(A=E121181)											
I	40	160490-78230	CORD,STOP	1							W
(A=E121181)											

Fig.11. TENSION ARM

(A)=MCG8
(B)=MCG8-Q
(C)=

(D)=
(E)=
(F)=

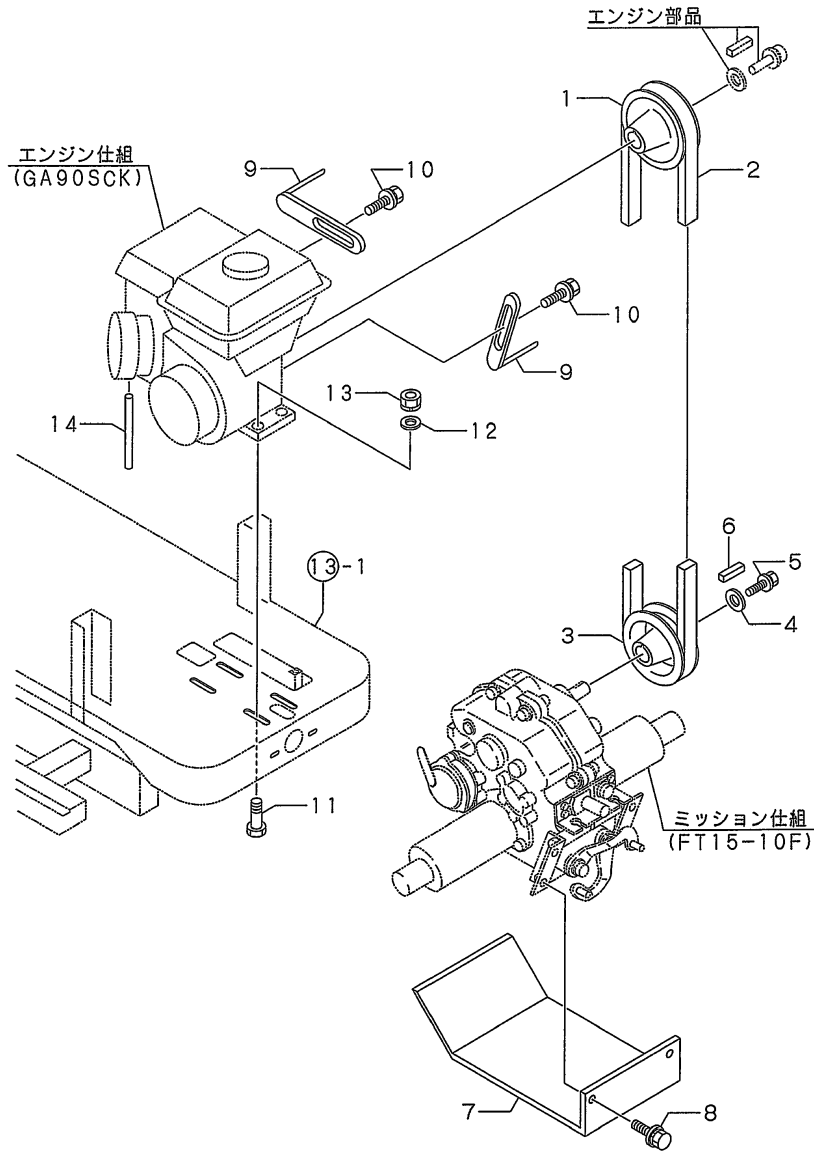


REF.	LEV.	PARTS NO.	DESCRIPTION	Q'TY						I	R
				(A)	(B)	(C)	(D)	(E)	(F)		
1	1	1N3560-22000	ARM,TENSION	1	1						
I	1-1	1N3560-22001	ARM,TENSION	1	1						S
		(A=F011182) (B=F011182)									
2	1	26018-080164	BOLT M 8X 16	2	2						
3	1	1N1291-22030	ROLLER SS,TENSION	1	1						
4	1	22137-120000	WASHER 12,POLISHED	1	1						
5	1	22217-120000	SPRING WASHER 12	1	1						
6	1	26757-120002	LOCK NUT M12 PLATED	1	1						
7	1	24761-060000	NIPPLE MT6X1, GREASE	1	1						
8	1	1N3510-42090	SPRING 16.5X93,TENS.	1	1						

Fig.12. PULLEY

(A)=MCG8
(B)=MCG8-Q
(C)=

(D)=
(E)=
(F)=



N114137

REF.	LEV.	PARTS NO.	DESCRIPTION	QTY						I	R
				(A)	(B)	(C)	(D)	(E)	(F)		
1	1	1N3560-21000	ENGINE PULLEY	1	1						
2	1	25123-002701	V-BELT	1	1						
3	1	1N3560-21010	PULLEY,TRANSMISSION	1	1						
4	1	1N1240-21040	WASHER	1	1						
5	1	26016-060164	BOLT 6X16 W/L.W.	1	1						
6	1	22550-050201	KEY 5X20	1	1						
7	1	1N3560-58030	COVER, UNDER	1	1						
8	1	26018-080164	BOLT M 8X 16	2	2						
9	1	1N3520-22070	GUIDE A4,BELT	2	2						
10	1	26018-080164	BOLT M 8X 16	2	2						
I	11	1	26106-080452	BOLT M 8X 45 PLATED	4	4					
I	12	1	22137-080000	WASHER 8, POLISHED	4	4					
	13	1	26051-080002	NUT M 8	4	4					
I	14	1	1N3560-14010	HOSE, DRAIN 125	1	1					W
		(A=F013186)	(B=F013186)								

Fig.13. BODY FRAME

(A)=MCG8
(B)=MCG8-Q
(C)=

(D)=
(E)=
(F)=

REF.	LEV.	PARTS NO.	DESCRIPTION	QTY						I	R
				(A)	(B)	(C)	(D)	(E)	(F)		
1	1	7N3560-31000	FRAME PL ASSY.,BODY	1							
2	1	7N3560-58000	COVER PL ASSY,PULLEY	1							
3	1	1N1291-58080	BOLT 6X16 W/P&SW.	3	3						
4	1	1N3560-58040	COVER, UNDER	1	1						
5	1	26018-080164	BOLT M 8X 16	1	1						
6	1	26018-060164	BOLT M 6X 16	1	1						
I	7	1	1N3560-31000	FRAME, BODY		1					
I	8	1	1N3560-58000	COVER, PULLEY		1					

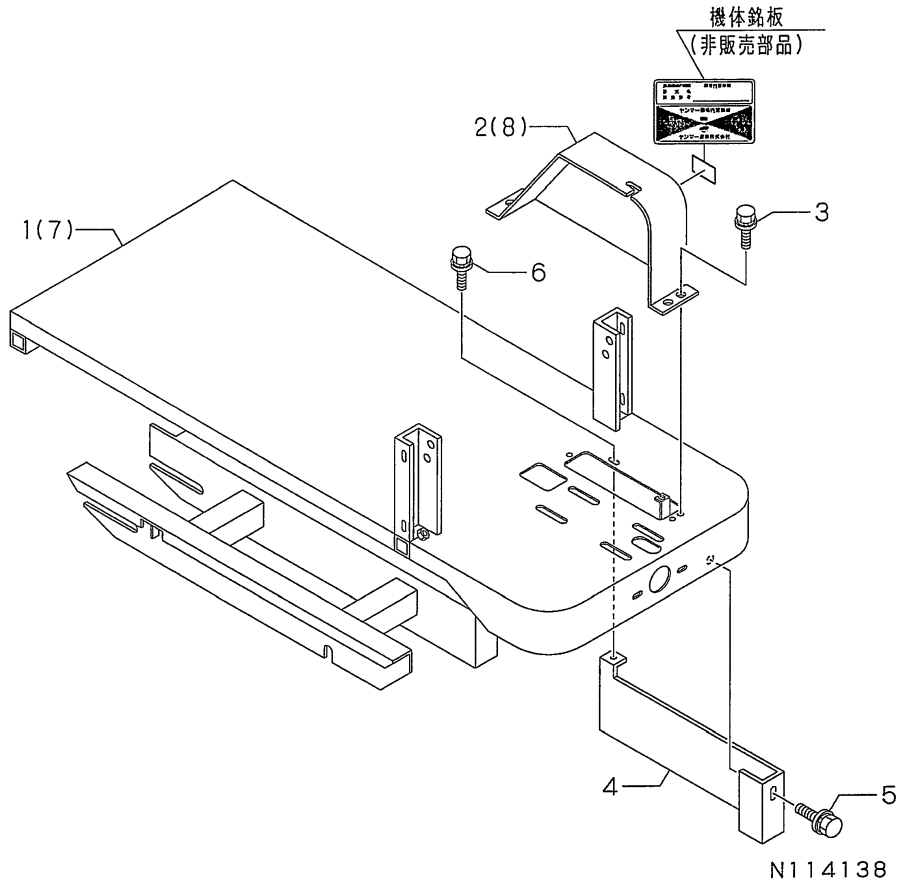
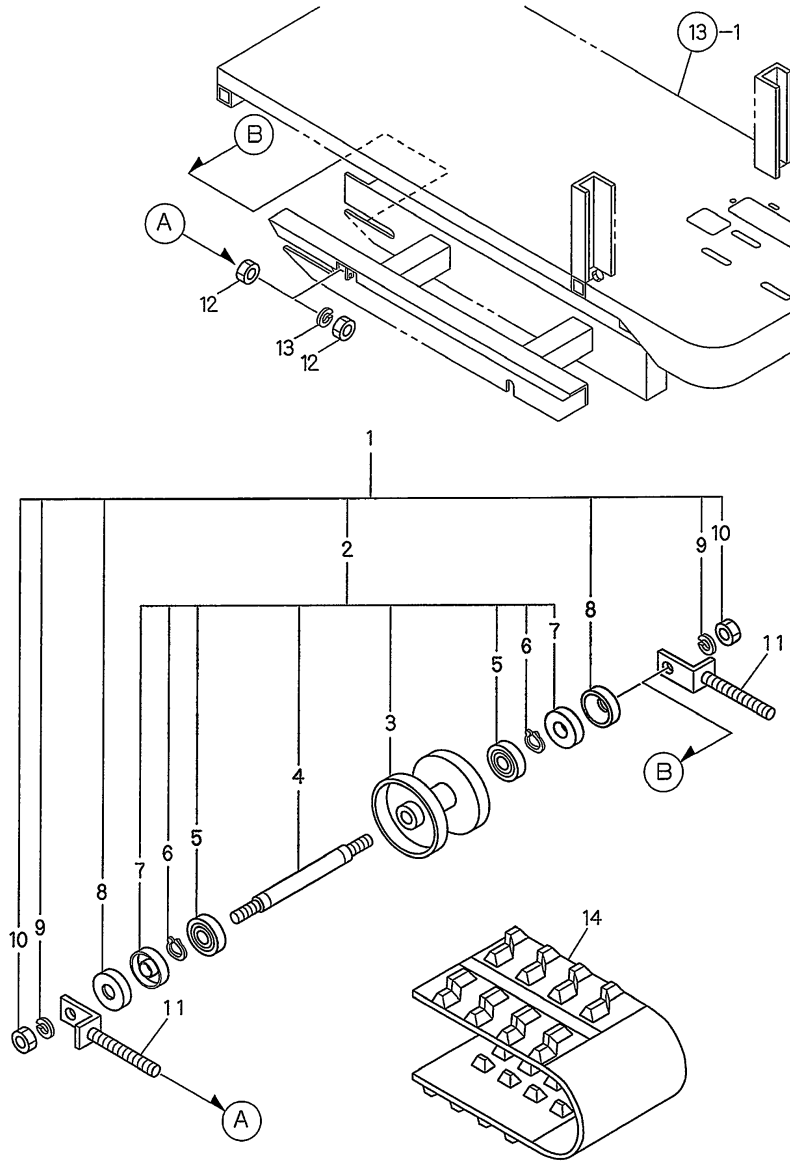


Fig.14. IDLER

(A)=MCG8
(B)=MCG8-Q
(C)=

(D)=
(E)=
(F)=

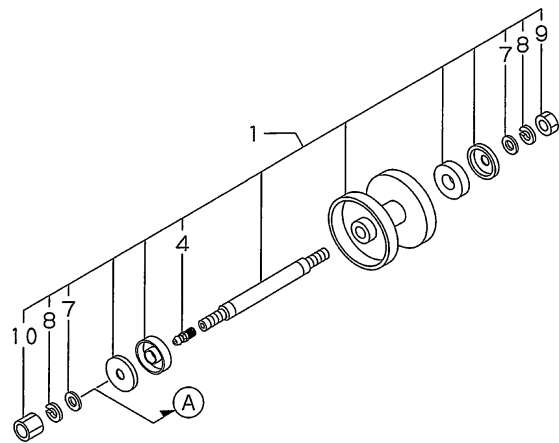
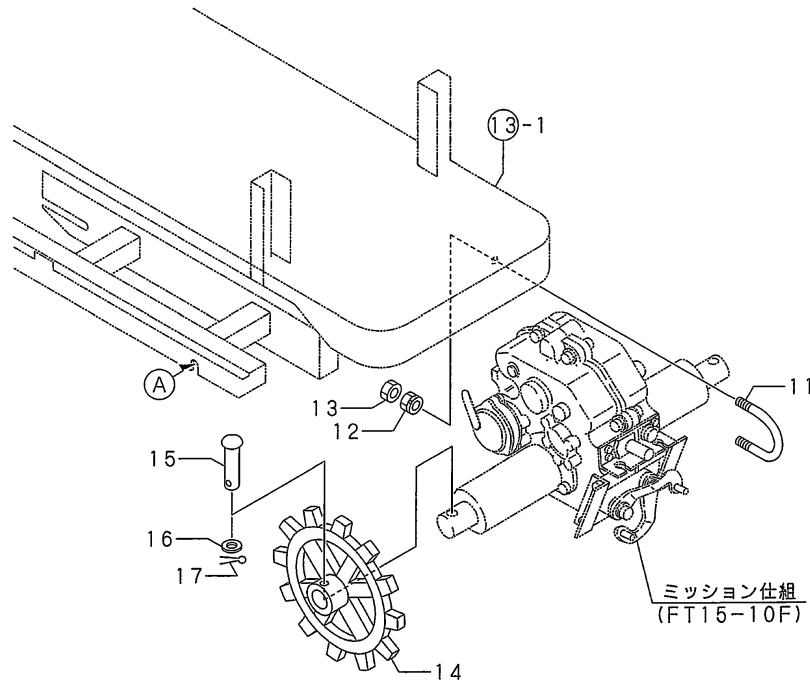


REF.	LEV.	PARTS NO.	DESCRIPTION	Q'TY						I	R
				(A)	(B)	(C)	(D)	(E)	(F)		
1	1	7N3560-35020	FLOAT RING SET	2	2						
2	2	7N3560-35000	FLOAT RING ASSY.	2	2						
3	3	1N3560-35030	RING,FLOAT	2	2						
4	3	1N3560-35010	SHAFT,TRACK ROLLER	2	2						
5	3	24101-060024	BALL BEARING	4	4						
6	3	22242-000150	CIRCLIP 15	4	4						
7	3	24421-153206	SEAL TC 153206,OIL	4	4						
8	2	1N1091-36000	COVER,OIL SEAL	4	4						
9	2	22217-120000	SPRING WASHER 12	4	4						
10	2	26717-120002	NUT M12	4	4						
11	1	1N3560-37010	SCREW	4	4						
12	1	26717-120002	NUT M12	4	4						
13	1	22217-120000	SPRING WASHER 12	2	2						
14	1	1N3560-37000	CRAWLER 160X60X31,RB	2	2						

Fig.15. TRACK ROLLER

(A)=MCG8
(B)=MCG8-Q
(C)=

(D)=
(E)=
(F)=



N114140

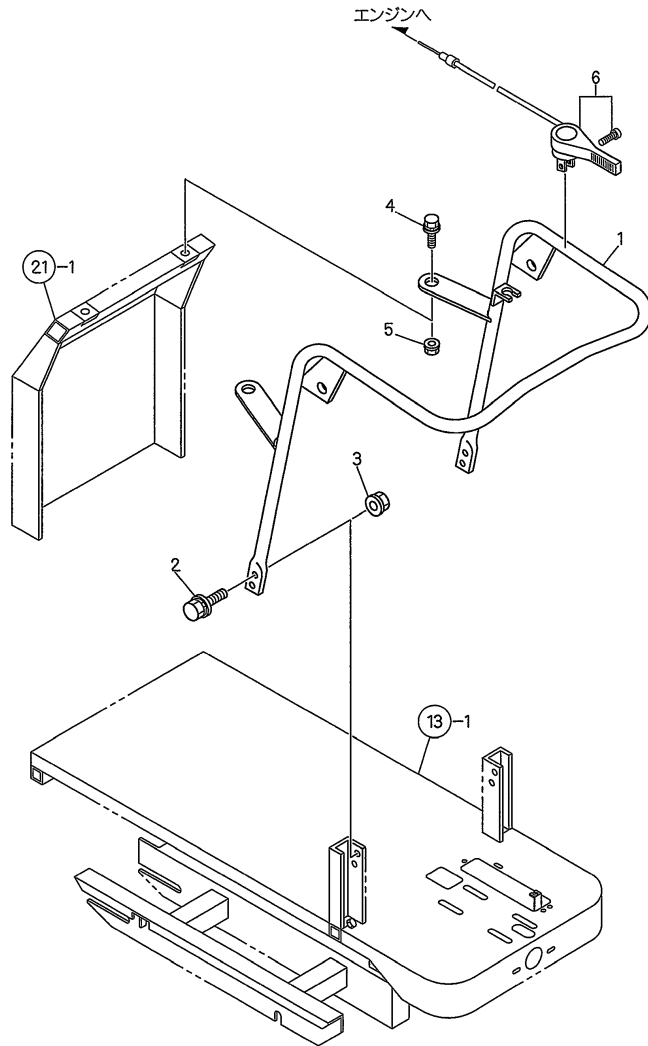
REF.	LEV.	PARTS NO.	DESCRIPTION	Q'TY						I	R	
				(A)	(B)	(C)	(D)	(E)	(F)			
1	1	7N3560-35010	ROLLER ASSY.,TRACK	2								
I	1-1	7N3560-36000	ROLLER ASSY.,TRACK	2	2							N
(A=F012822)												
4	2	24761-010000	NIPPLE M6F, GREASE	2	2							
7	2	22137-120000	WASHER 12,POLISHED	4	4							
8	2	22217-120000	SPRING WASHER 12	4	4							
9	2	26717-120002	NUT M12	2	2							
10	2	1N3560-35060	NUT M12,HIGH	2								
I	10-1	2	1N3561-36000	NUT M12,HIGH	2	2						N
(A=FXXXXXXX)												
11	1	1N3501-35030	U-BOLT	2	2							
I	12	1	26052-100002	NUT M10 W/SPRING	4	4						
13	1	26757-100002	LOCK NUT M10	4	4							
14	1	1N3560-35020	SPROCKET	2	2							
15	1	1N1291-35020	PIN,AXLE	2	2							
16	1	22137-100000	WASHER 10,POLISHED	2	2							
17	1	22417-250250	COTTER PIN 2.5X25	2	2							

Fig.16. HANDLE

0CNP3-G30700 16. HANDLE

(A)=MCG8
(B)=MCG8-Q
(C)=

(D)=
(E)=
(F)=



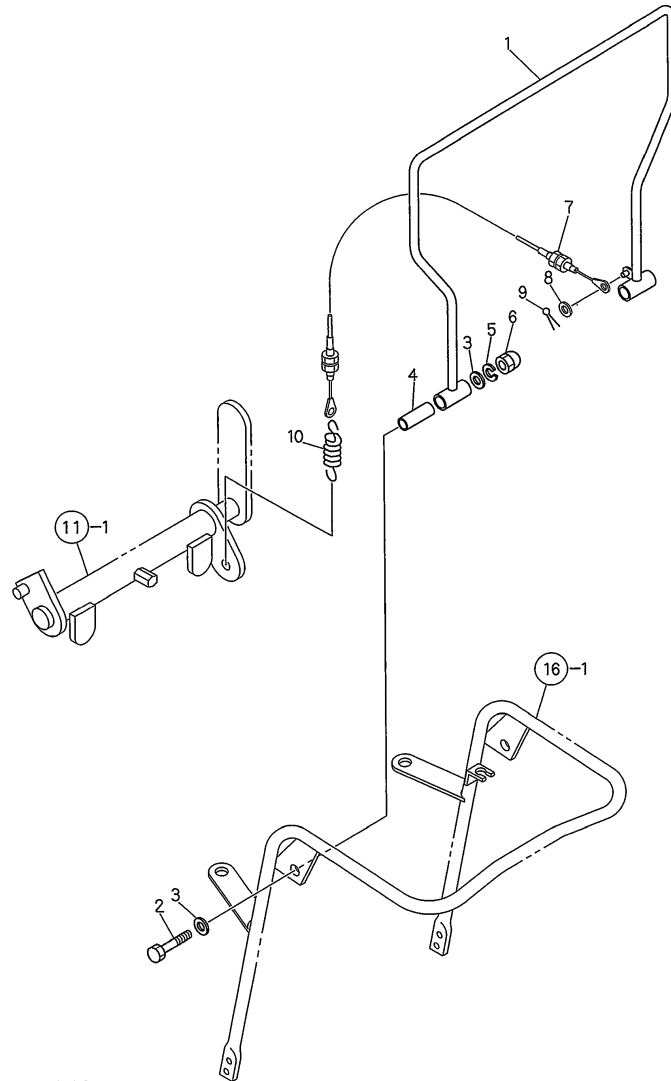
REF.	LEV.	PARTS NO.	DESCRIPTION	Q'TY						I	R
				(A)	(B)	(C)	(D)	(E)	(F)		
1	1	1N3560-47000	HANDLE	1	1						
2	1	26018-100254	BOLT M10X 25	4	4						
3	1	26367-100002	U-NUT M10	4	4						
4	1	1N1291-58080	BOLT 6X16 W/P&SW.	2	2						
5	1	26367-060002	NUT M 6	2	2						
6	1	1N3560-51030	LEVER COMP,ACCELERAT	1	1						

N114141

Fig.17. TRAVEL CLUTCH LEVER

(A)=MCG8
(B)=MCG8-Q
(C)=

(D)=
(E)=
(F)=



N114142

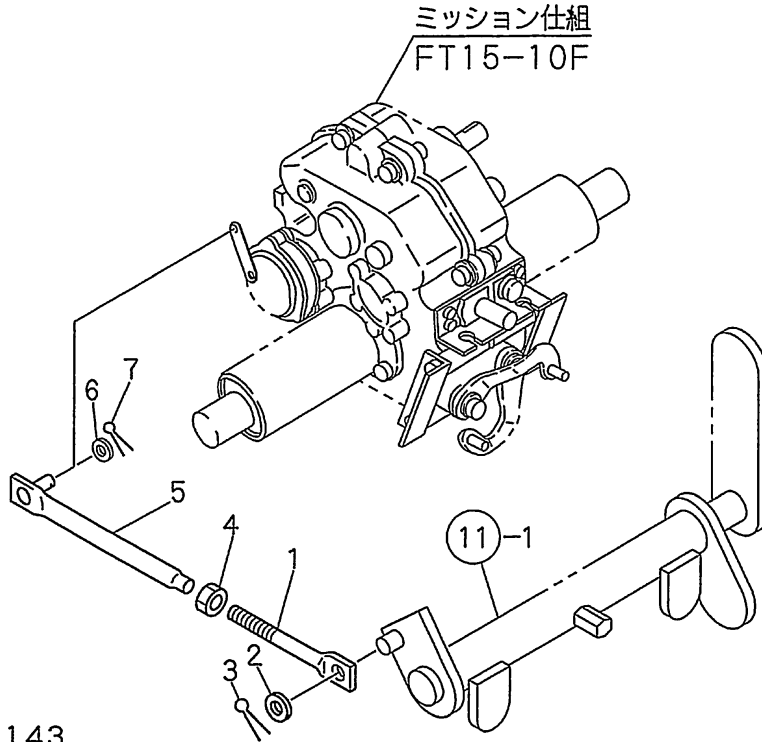
REF.	LEV.	PARTS NO.	DESCRIPTION	Q'TY						I	R
				(A)	(B)	(C)	(D)	(E)	(F)		
1	1	1N3560-42000	CLUTCH,DEADMAN	1	1						
I 2	1	26116-080502	BOLT M 8X 50 PLATED	2	2						
3	1	22137-080000	WASHER 8, POLISHED	4	4						
4	1	1N3560-42040	PIPE,FULCRUM	2	2						
5	1	22217-080000	SPRING WASHER 8	2	2						
6	1	26658-080002	CAP NUT M 8	2	2						
7	1	1N3560-51000	WIRE,CONTROL	1	1						
8	1	22137-060000	WASHER 6, POLISHED	1	1						
9	1	22417-200160	COTTER PIN 2.0X16	1	1						
10	1	1N1210-53030	SPRING 21.5X78,TENS.	1	1						

Fig.18. BRAKE LEVER

(A)=MCG8
(B)=MCG8-Q
(C)=

(D)=
(E)=
(F)=

REF.	LEV.	PARTS NO.	DESCRIPTION	Q'TY						I	R
				(A)	(B)	(C)	(D)	(E)	(F)		
1	1	1N1360-22090	SCREW 8X94,ADJUST	1	1						
2	1	22137-060000	WASHER 6, POLISHED	1	1						
3	1	22417-200160	COTTER PIN 2.0X16	1	1						
4	1	26757-080002	LOCK NUT M 8 PLATED	1	1						
5	1	1N3510-42070	ROD,BRAKE	1	1						
6	1	22137-060000	WASHER 6, POLISHED	1	1						
7	1	22417-200160	COTTER PIN 2.0X16	1	1						



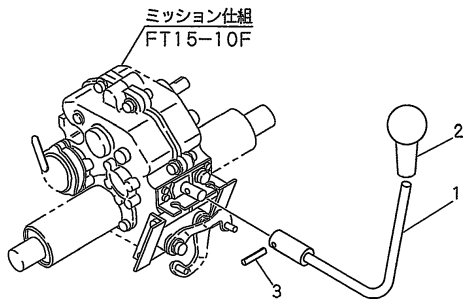
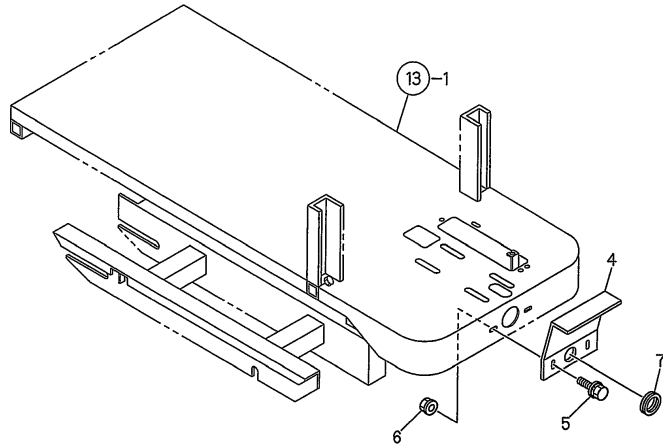
N114143

Fig.19. MAIN CHANGE LEVER

(A)=MCG8
(B)=MCG8-Q
(C)=

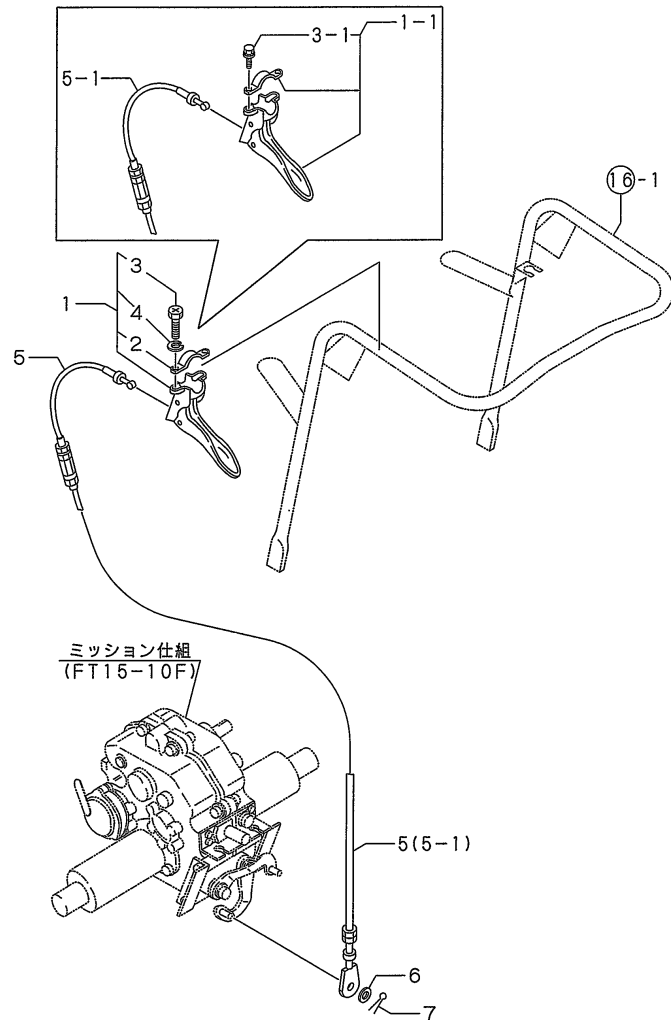
(D)=
(E)=
(F)=

REF.	LEV.	PARTS NO.	DESCRIPTION	Q'TY						I	R
				(A)	(B)	(C)	(D)	(E)	(F)		
1	1	1N3560-41000	LEVER, SHIFT	1	1						
2	1	1N1101-44010	GRIP 10,CLUTCH	1	1						
3	1	22351-050025	SPRING PIN 5X25	1	1						
4	1	1N3560-41020	GUIDE PLATE	1	1						
5	1	1N1291-58080	BOLT 6X16 W/P&SW.	2	2						
6	1	26367-060002	NUT M 6	2	2						
7	1	1N3560-53000	GROMMET 14	1	1						



N114144

Fig.20. SIDE CLUTCH LEVER



N114145

0CNP3-G30700 20. SIDE CLUTCH LEVER

(A)=MCG8
(B)=MCG8-Q
(C)=

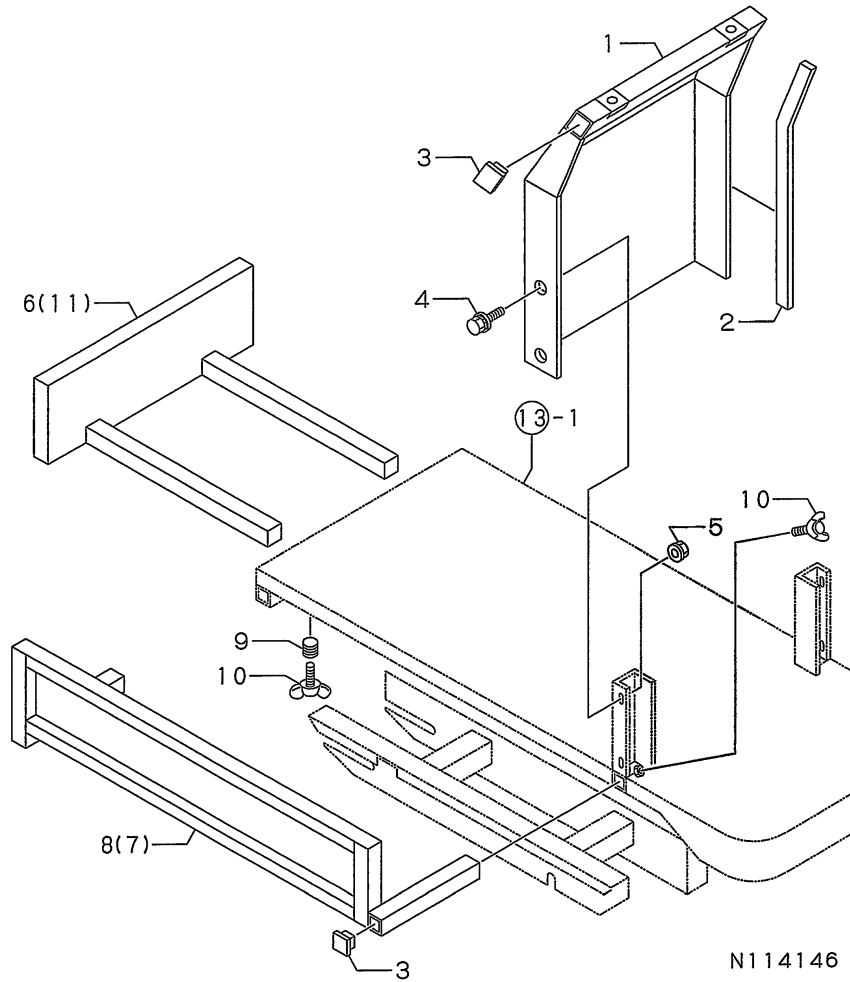
(D)=
(E)=
(F)=

REF.	LEV.	PARTS NO.	DESCRIPTION	Q'TY						I	R
				(A)	(B)	(C)	(D)	(E)	(F)		
1	1	1N3560-51010	LEVER ASSY.,CLUTCH	2	2						
I 1-1	1	1E4490-51701 (B=F013495)	LEVER CMP.,SD.CLUTCH		2						N
I 2	2	1N3560-51050 (B=F013495)	BAND	2	2						Z
I 3	2	1N3560-51060	BOLT M6X25,CRS.RECSS	4	4						
I 3-1	2	26014-060259 (B=F013495)	BOLT 6X25 W/PL.&SP.W		4						S
I 4	2	22217-060000 (B=F013495)	SPRING WASHER 6	2	2						Z
5	1	1N3560-51020	WIRE,SIDE CLUTCH	2	2						
I 5-1	1	1N3560-51021 (B=F013495)	WIRE,SIDE CLUTCH		2						S
6	1	22137-060000	WASHER 6, POLISHED	2	2						
7	1	22417-200160	COTTER PIN 2.0X16	2	2						

Fig.21. PLATFORM CARRIER

(A)=MCG8
(B)=MCG8-Q
(C)=

(D)=
(E)=
(F)=

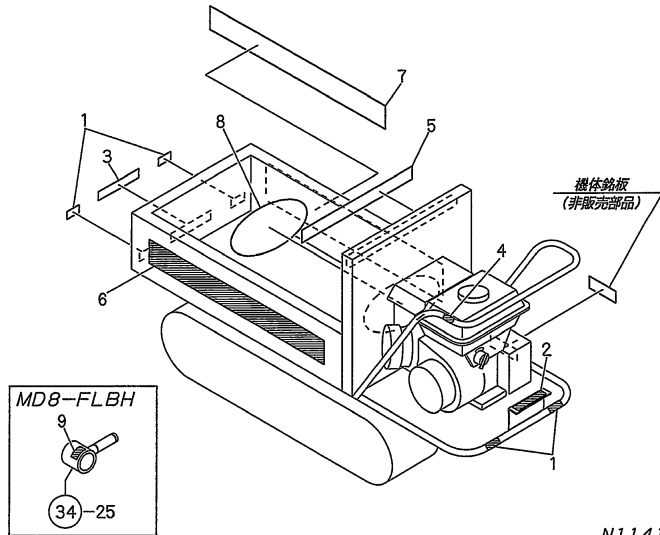
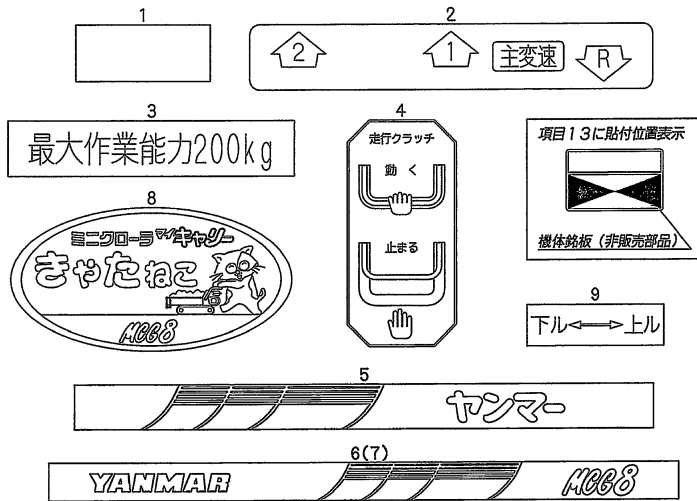


REF.	LEV.	PARTS NO.	DESCRIPTION	Q'TY						I	R
				(A)	(B)	(C)	(D)	(E)	(F)		
1	1	1N3560-65070	PLATE,BAKE	1	1						
2	1	1N3560-58060	TRIM	2	2						
3	1	1N1520-53020	PLUG 25J,SQUARE OIL	4	4						
4	1	1N1291-58080	BOLT 6X16 W/P&SW.	4	4						
5	1	26367-060002	NUT M 6	4	4						
6	1	7N3560-65000	PLATE PL ASSY.,FRONT	1							
7	1	1N3560-65000	PLATE R,SIDE	1	1						
8	1	1N3560-65040	PLATE L,SIDE	1	1						
9	1	1N1151-53020	SPRING 10.5X25,COMPR	4	4						
10	1	26647-100302	BOLT 10X30,WING	6	6						
11	1	1N3560-65050	PLATE, FRONT		1						

Fig.22. LABELS

(A)=MCG8
(B)=MCG8-Q
(C)=

(D)=
(E)=
(F)=



N114147

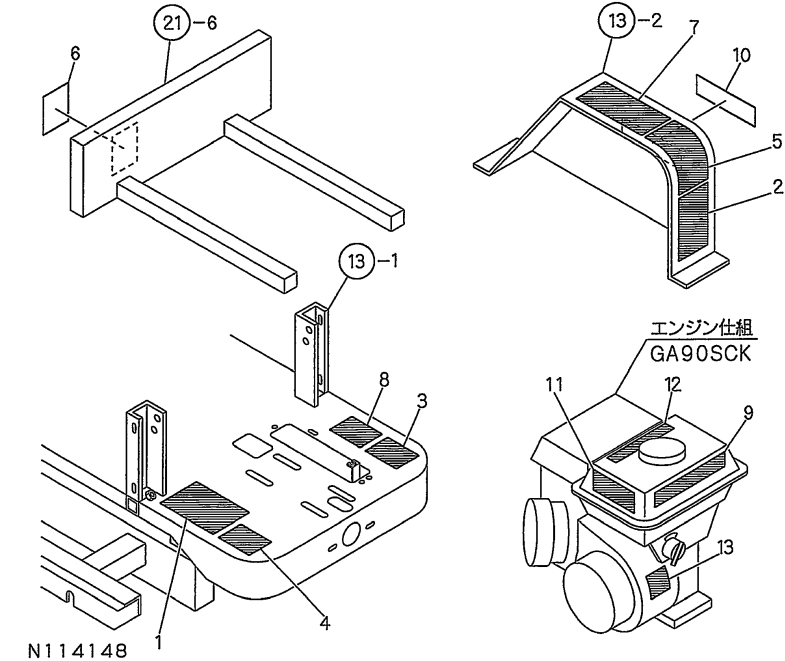
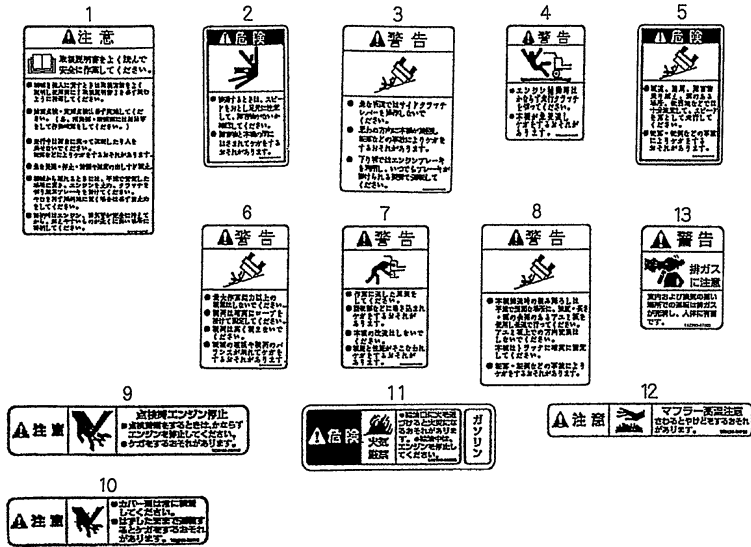
REF.	LEV.	PARTS NO.	DESCRIPTION	QTY						I	R
				(A)	(B)	(C)	(D)	(E)	(F)		
I	1	1 1N1070-93050 (A=FXXXXXX)	TAPE, REFLECTIVE	4							Z
	2	1 1N3500-93120	LABEL, CHANGE	1							
	3	1 1N3560-93010	CAPACITY 200, MX.WORK	1							
	4	1 1N3560-93020	LABEL, DEADMAN	1							
	5	1 1N3560-93030	STRIPE, FRONT	1							
	6	1 1N3560-93040	STRIPE L, SIDE	1							
I	6-1	1 1N3560-93040 (A=FXXXXXX)	STRIPE L, SIDE	2							K
I	7	1 1N3560-93050 (A=FXXXXXX)	LABEL, SIDE(R)	1							Z
	8	1 1N3560-93110	LABEL	1							
I	9	1 1N3560-93180	LABEL, HIGH-LOW	1							1

Remarks
(1)EXCLUSIVE PARTS FOR THE MD8-FLBH
(MULTI-DOZER)

Fig.23. LABEL(SAFETY)

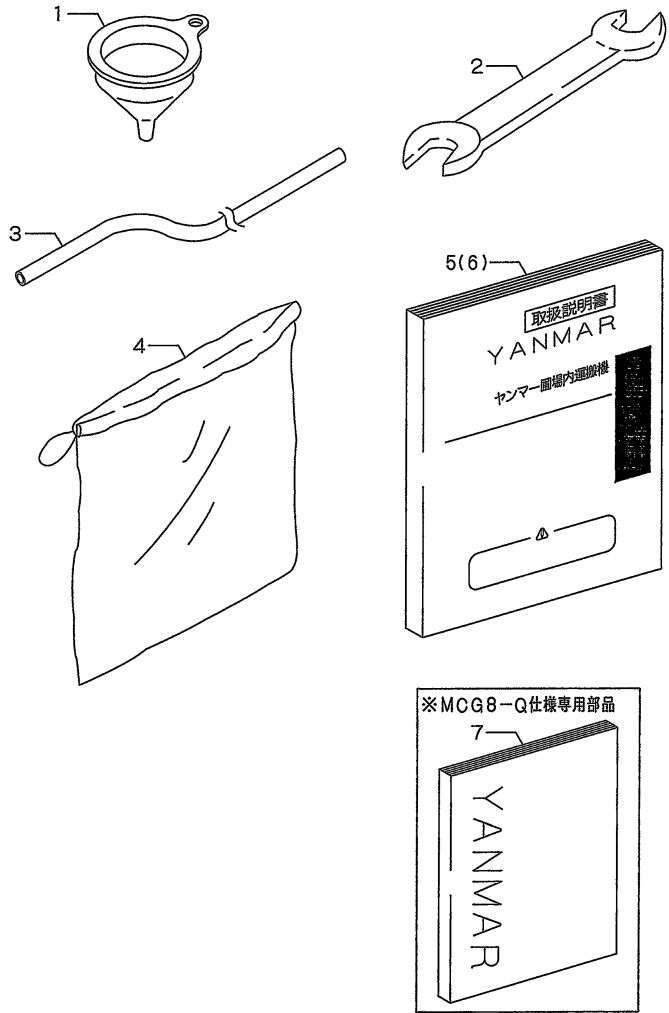
(A)=MCG8
(B)=MCG8-Q
(C)=

(D)=
(E)=
(F)=



REF.	LEV.	PARTS NO.	DESCRIPTION	QTY						I	R
				(A)	(B)	(C)	(D)	(E)	(F)		
1	1	1N3544-93130	CAUTION,HANDLING,ETC	1							
2	1	1N3544-93140	DANGER,IN-BACKING	1							
3	1	1N1383-93190	WARNING,STEEP SLOPE	1							
4	1	1N1313-93160	WARNING,IN-STARTING	1							
5	1	1N3544-93170	DANGER,SLOPE/SHOULDR	1							
6	1	1N3544-93180	WARNING,IN-LOADING	1							
7	1	1N3544-93200	WARNING,DRESS/REMDL.	1							
8	1	1N3544-93210	WARNING,M/C TRANSPRT	1							
9	1	1C6700-85650	CAUTION,ENGINE STOP	1							
10	1	1C6700-85670	CAUTION,COVER	1							
11	1	1A2100-86500	DANGER,FIRE PROHIBIT	1							
12	1	1E5120-86720	CAUTION,MUFFLER	1							
13	1	1A2260-87100	WARNING,EXH.GAS	1							

Fig.24. TOOLS & ACCESSORIES



N114149

0CNP3-G30700 24. TOOLS & ACCESSORIES

(A)=MCG8
(B)=MCG8-Q
(C)=

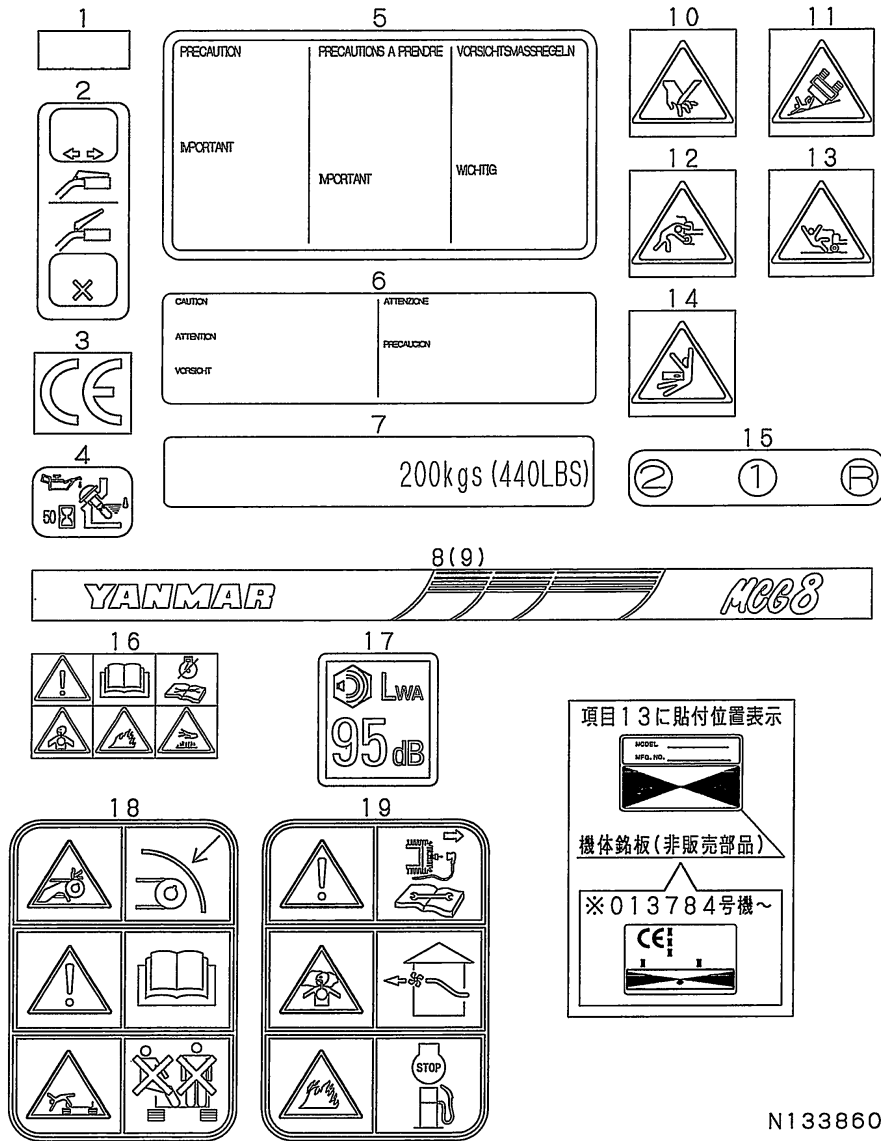
(D)=
(E)=
(F)=

REF.	LEV.	PARTS NO.	DESCRIPTION	QTY						I	R
				(A)	(B)	(C)	(D)	(E)	(F)		
I	1	1	1N1070-91010 FUNNEL (B=F013665)	1	1						Z
I	2	1	1N1070-91050 WRENCH 17X19 (B=F013665)	1	1						Z
I	3	1	1N1070-91020 HOSE (B=F013665)	1	1						Z
I	4	1	1N1070-91090 BAG,TOOL (B=F013665)	1	1						Z
		5	1N3560-95000 OPERATOR'S MANUAL	1							
I	6	1	1N3560-95150 MANUAL,MULTI DOZER	1							1
I	7	1	1N3560-95101 INSTRUCTION BOOK			1					

Remarks

(1)EXCLUSIVE PARTS FOR THE MD8-FLBH
(MULTI-DOZER)

Fig.33. LABEL(ADD.ITEM)



N133860

(A)=MCG8
(B)=MCG8-Q
(C)=

(D)=
(E)=
(F)=

REF.	LEV.	PARTS NO.	DESCRIPTION	QTY						I	R
				(A)	(B)	(C)	(D)	(E)	(F)		
1	1	1N1070-93050	TAPE,REFLECTIVE (B=FXXXXXX)		4						Z
2	1	1N3506-93260	LABEL,CLUTCH		1						
3	1	1N3506-93270	LABEL "CE" (B=F013784)		1						Z
4	1	1N3507-93160	LEVEL,OIL		1						
5	1	1N3506-93300	LABEL (B=FXXXXXX)		1						Z
6	1	1N3506-93310	LABEL,CRAWLER CAUT'N (B=FXXXXXX)		1						Z
7	1	1N3560-93160	LABEL,CARRY CAPACITY		1						
8	1	1N3560-93040	STRIPE L,SIDE		1						
8-1	1	1N3560-93040	STRIPE L,SIDE (B=FXXXXXX)		2						K
9	1	1N3560-93050	LABEL, SIDE(R) (B=FXXXXXX)		1						Z
10	1	1N3544-93310	LABEL (B=F011861)		1						W
10-1	1	1N3544-93310	LABEL (B=F013784)		1						Z
11	1	1N3544-93320	LABEL (B=F011861)		1						W
11-1	1	1N3544-93320	LABEL (B=F013784)		1						Z
12	1	1N3544-93330	LABEL (B=F011861)		1						W
12-1	1	1N3544-93330	LABEL (B=F013784)		1						Z
13	1	1N3544-93340	LABEL (B=F011861)		1						W
13-1	1	1N3544-93340	LABEL (B=F013784)		1						Z
14	1	1N3544-93350	LABEL (B=F011861)		1						W
14-1	1	1N3544-93350	LABEL (B=F013784)		1						Z
15	1	1N3500-93040	LABEL,CHANGE		1						
16	1	1N3544-93360	LABEL (B=FXXXXXX)		1						W
16-1	1	1N3544-93360	LABEL (B=F013784)		1						Z
17	1	1N3503-93310	LABEL 95DB,NOISE (B=FXXXXXX)		1						W
18	1	1N3563-93020	LABEL,SAFETY (B=F013784)		1						W
19	1	1N3563-93050	LABEL,SAFETY (B=F013784)		1						W

Fig.25. TRANSMISSION CASE

(A)=FT15-10F

(B)=

(C)=

(D)=

(E)=

(F)=

REF.	LEV.	PARTS NO.	DESCRIPTION	QTY						I	R
				(A)	(B)	(C)	(D)	(E)	(F)		
1	1	1N3560-24030	HOUSING (R), TRANS.	1							
2	1	1N3560-24040	CASE L,TRANSMISSION	1							
3	1	1N3560-24050	CASE R,AXLE	1							
4	1	1N3560-24060	CASE L,AXLE	1							
5	1	1N3560-24070	PAWL,CLUTCH	2							
6	1	26016-080254	BOLT M 8X 25	8							
7	1	1N3510-24060	PACKING,CASE	1							
8	1	26117-081102	BOLT M 8X110 PLATED	4							
9	1	22137-080000	WASHER 8, POLISHED	16							
10	1	26051-080002	NUT M 8	8							
11	1	26117-080304	BOLT M 8X 30 PLATED	4							
12	1	1N3510-24050	PLUG 15,BLIND	1							
13	1	1N1430-24080	CAP,SEAL	2							
14	1	1N1291-24070	PLUG,HOLED OIL	1							
15	1	1N1291-24030	PLUG,OIL	1							
16	1	1N3530-24060	PLUG PT1/4,DRAIN	1							
17	1	1N3560-24010	BRACKET	2							
I	18	1N3560-24000	OUTTER SUPPORT	1							Z
		(A=F011182)									
I	19	1N3530-24070	SCREW M6X10,PAN HD.	4							Z
		(A=F011182)									

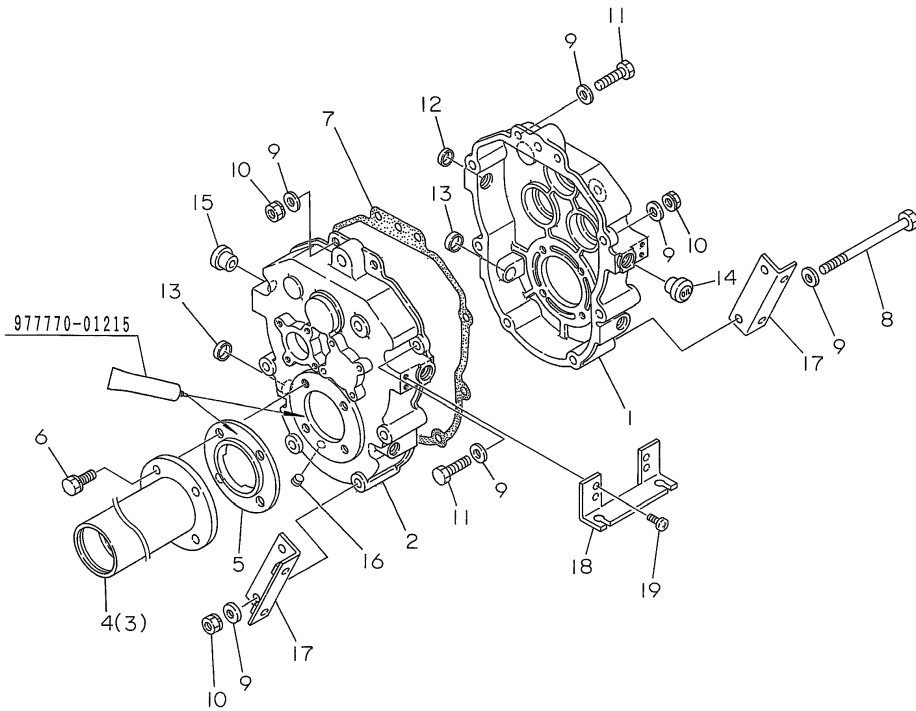


Fig.26. MAIN SHAFT

0CNP3-G30700 26. MAIN SHAFT

(A)=FT15-10F
(B)=
(C)=

(D)=
(E)=
(F)=

REF.	LEV.	PARTS NO.	DESCRIPTION	QTY						I	R
				(A)	(B)	(C)	(D)	(E)	(F)		
1	1	1N3510-25000	SHAFT	1							
2	1	1N3510-25010	GEAR 12-20	1							
3	1	24421-153007	SEAL TC15 30 07, OIL	1							
4	1	24101-062024	BALL BEARING	2							
5	1	1N3510-25330	LINER 18X34.5X0.5	1							

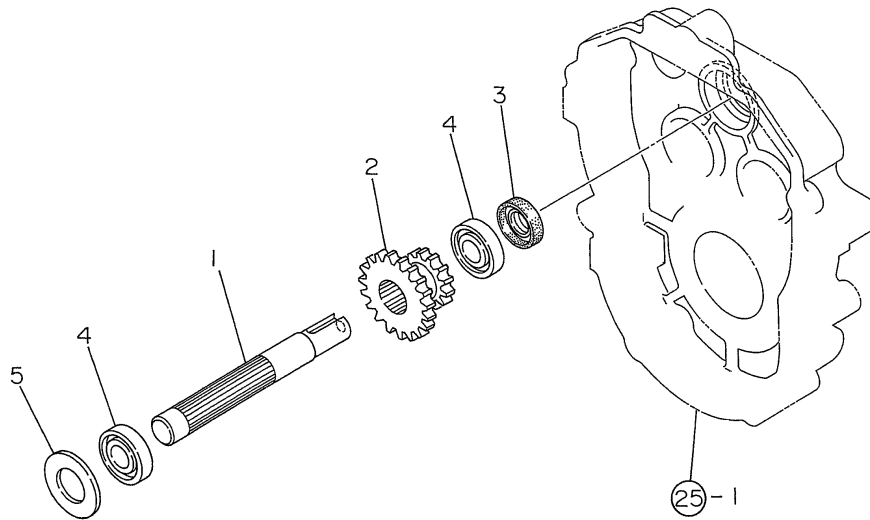
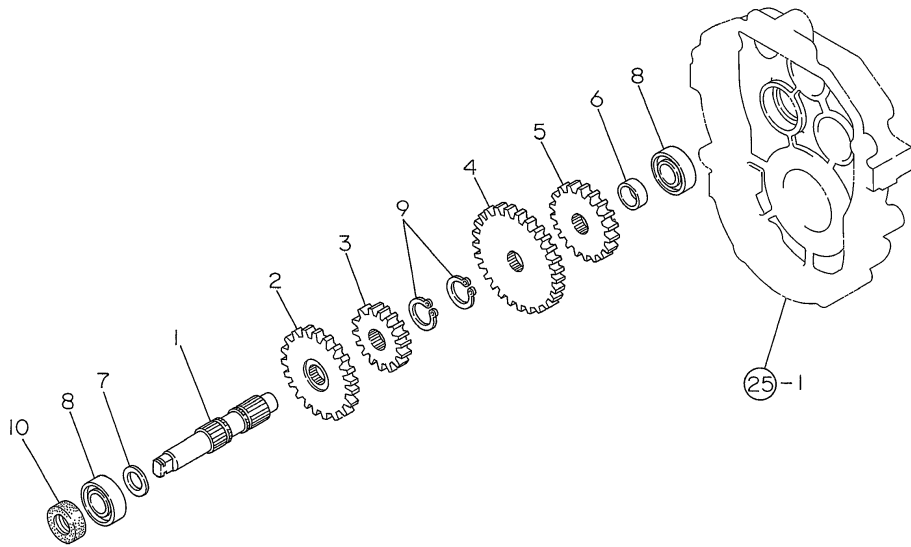


Fig.27. TRANSMISSION SHAFT B

(A)=FT15-10F
(B)=
(C)=

(D)=
(E)=
(F)=

REF.	LEV.	PARTS NO.	DESCRIPTION	Q'TY						I	R
				(A)	(B)	(C)	(D)	(E)	(F)		
1	1	1N3510-25090	SHAFT,2ND	1							
2	1	1N3510-25030	GEAR 35	1							
3	1	1N3510-25040	GEAR 23	1							
4	1	1N3510-25050	GEAR 43	1							
5	1	1N3530-25020	GEAR 28	1							
6	1	1N3510-25070	COLLAR 16.1X21.7X8.5	1							
7	1	1N3510-25080	LINER 15.5X23X1.0	1							
8	1	24101-062024	BALL BEARING	2							
9	1	22242-000190	CIRCLIP 19	2							
10	1	24421-153007	SEAL TC15 30 07, OIL	1							



(A)=FT15-10F (D)=
 (B)= (E)=
 (C)= (F)=

Fig.28. TRANSMISSION SHAFT C

REF.	LEV.	PARTS NO.	DESCRIPTION	Q'TY						I	R	
				(A)	(B)	(C)	(D)	(E)	(F)			
1	1	1N3530-25080	SHAFT,3RD	1								
2	1	1N3510-25120	GEAR 32	1								
3	1	1N3530-25030	GEAR 27-43	1								
4	1	1N3510-25080	LINER 15.5X23X1.0	1								
5	1	1N3510-25170	METAL 15X15,OILLESS	1								
6	1	22242-000150	CIRCLIP 15	1								
7	1	24101-062024	BALL BEARING	2								

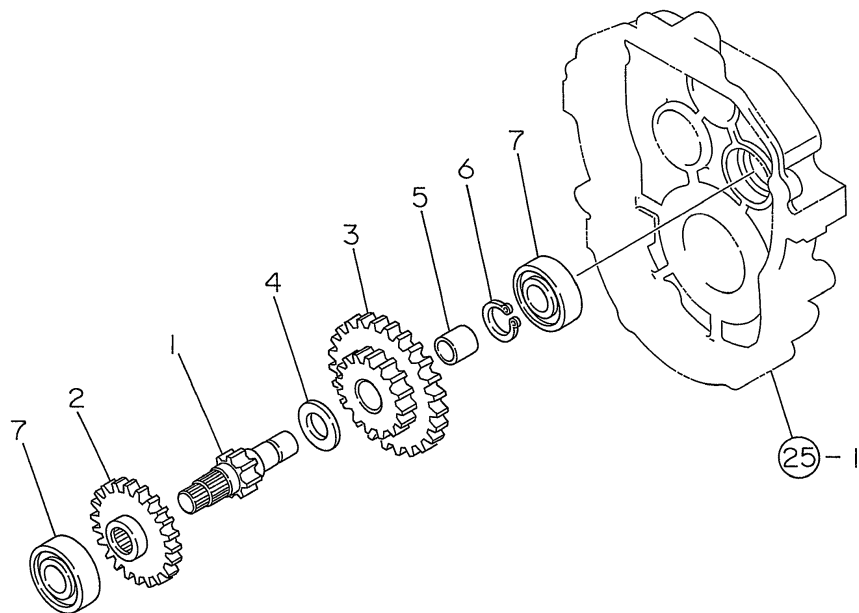


Fig.29. AXLE

(A)=FT15-10F

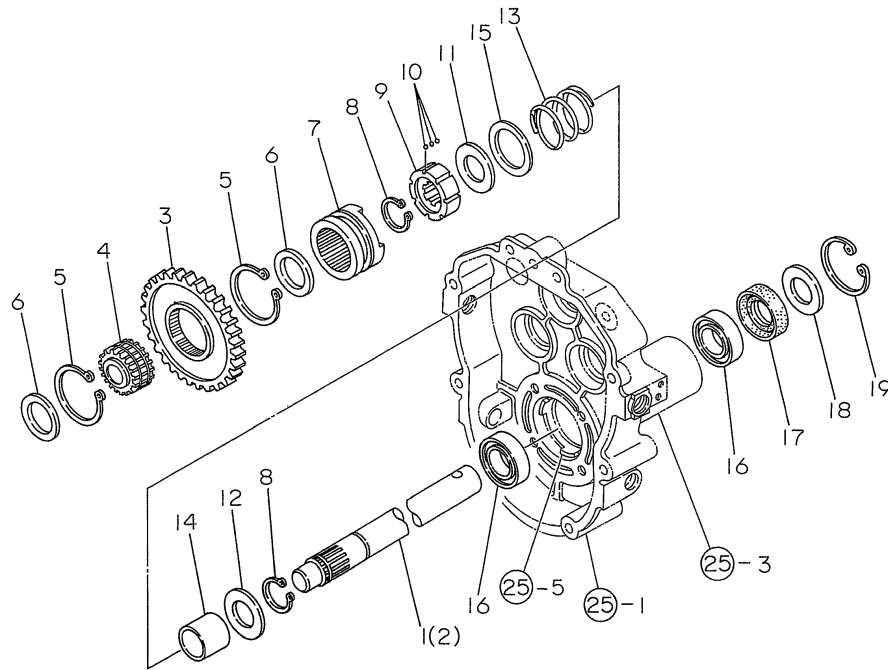
(B)=

(C)=

(D)=

(E)=

(F)=



REF.	LEV.	PARTS NO.	DESCRIPTION	Q'TY						I	R
				(A)	(B)	(C)	(D)	(E)	(F)		
1	1	1N3560-25000	SHAFT, R.H	1							
2	1	1N3560-25010	SHAFT(L)	1							
3	1	1N3510-25350	GEAR 50	1							
4	1	1N3510-25360	GEAR 28,CLUTCH	1							
5	1	22242-000500	CIRCLIP 50	2							
6	1	1N1291-25120	PLATE,BALL SUPPORT'G	2							
7	1	1N3560-25020	GEAR 28,SIDE CLUTCH	2							
8	1	22242-000250	CIRCLIP 25S	4							
9	1	1N3510-25380	BOSS,DRIVE	2							
10	1	1N1291-25150	BALL 4,STEEL	42							
11	1	1N1291-25160	LINER 2.0X25.5X46	2							
12	1	1N3560-25030	LINER 2.3X25.5X46	2							
I	12-1	1N1291-25160	LINER 2.0X25.5X46	2							N
			(A=FXXXXXX)								
13	1	1N1291-25180	SPRING,CLUTCH	2							
14	1	1N3510-25270	COLLR.25.4X31.8X25.8	2							
15	1	1N3510-25390	COLLAR,SPRING SHOE	2							
16	1	24101-060054	BALL BEARING 6005	4							
17	1	24421-254708	SEAL TC25 47 08, OIL	2							
18	1	1N1291-25200	COVER,OIL SEAL	2							
19	1	22252-000470	CIRCLIP 47(H)	2							

Fig.30. BRAKE

(A)=FT15-10F
(B)=
(C)=

(D)=
(E)=
(F)=

REF.	LEV.	PARTS NO.	DESCRIPTION	Q'TY						I	R
				(A)	(B)	(C)	(D)	(E)	(F)		
1	1	1N3510-25400	MOUNT	1							
2	1	26557-060162	SCREW M 6X 16	4							
3	1	22217-060000	SPRING WASHER 6	4							
4	1	1N1291-25220	DRUM,BRAKE	1							
5	1	22242-000140	CIRCLIP 14	1							
6	1	1N1291-25230	PACKING,BRAKE PLATE	1							
7	1	7N1291-25000	BRAKE PLATE ASSY.	1							
8	2	1N1291-25240	PLATE COMP.,BRAKE	1							
9	2	7N1291-25010	BRAKE SHOE ASSY.	1							
10	1	26016-060124	BOLT 6X12 W/L.W.	3							

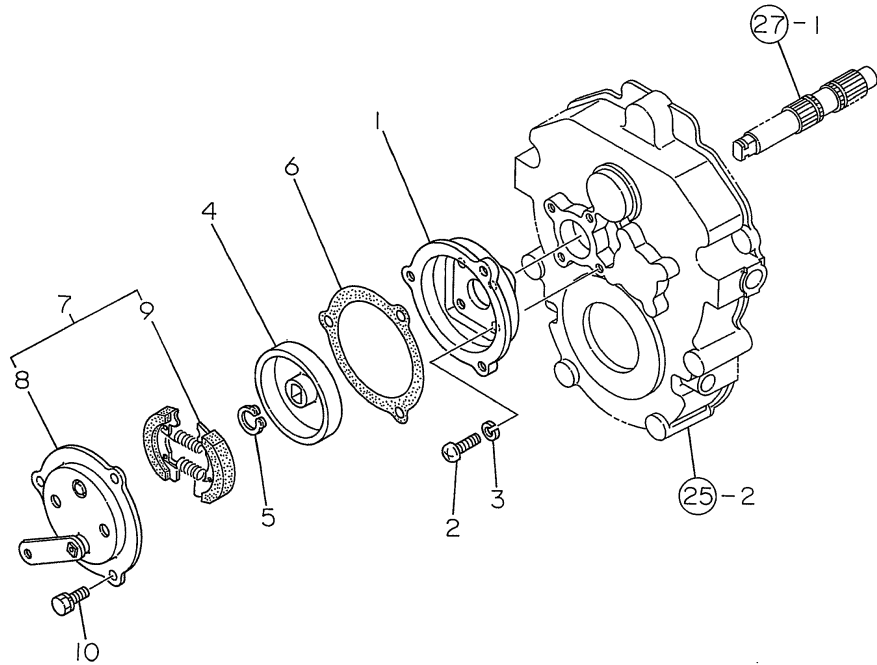


Fig.31. SIDE CLUTCH

(A)=FT15-10F

(B)=

(C)=

(D)=

(E)=

(F)=

REF.	LEV.	PARTS NO.	DESCRIPTION	Q'TY						I	R	
				(A)	(B)	(C)	(D)	(E)	(F)			
I	1	1	1N1296-25050	SHIFTER,SIDE CLUTCH						2		
I	1-1	1	1N3503-25180 (A=FXXXXXX)	LEVER						2		S
	2	1	1N3510-25310	PIN,SHIFT LEVER UPPR						2		
I	2-1	1	1N3561-25040 (A=FXXXXXX)	PIN,						2		S
	3	1	1N1296-25070	PIN,SHIFT LEVER LOWR						2		
	4	1	22351-050022	SPRING PIN 5X22						4		
I	4-1	1	22351-050022 (A=FXXXXXX)	SPRING PIN 5X22						2		K
	5	1	24311-000140	O-RING 1A P-14.0						2		
	6	1	1N3510-25320	LEVER						2		
	7	1	22137-080000	WASHER 8, POLISHED						2		
	8	1	22217-080000	SPRING WASHER 8						2		
	9	1	26717-080002	NUT 8						2		
	10	1	22351-030022	SPRING PIN 3X22						2		
I	10-1	1	22351-035022 (A=FXXXXXX)	SPRING PIN 3.5X22						2		S
I	11	1	22351-060022 (A=FXXXXXX)	SPRING PIN 6X22						2		W

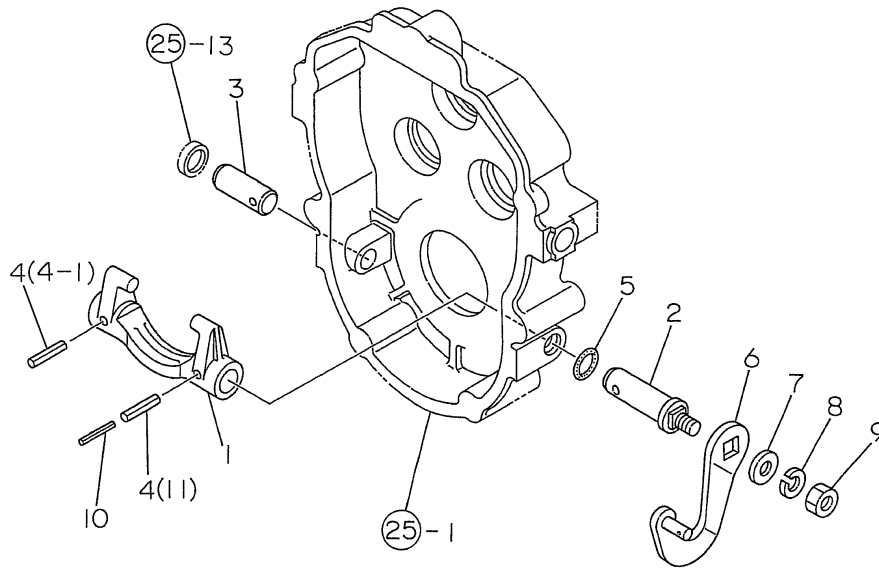
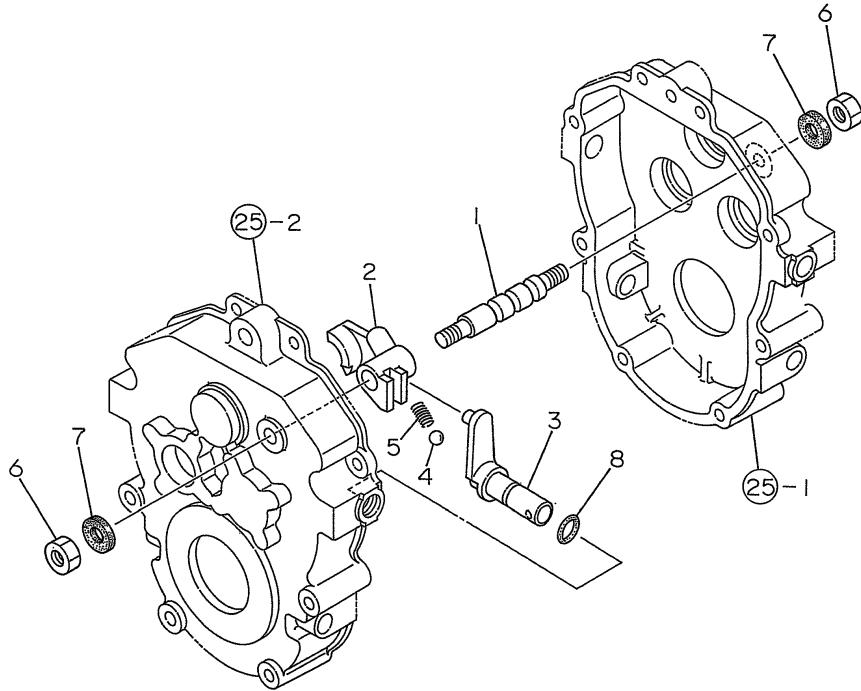


Fig.32. MAIN CHANGE

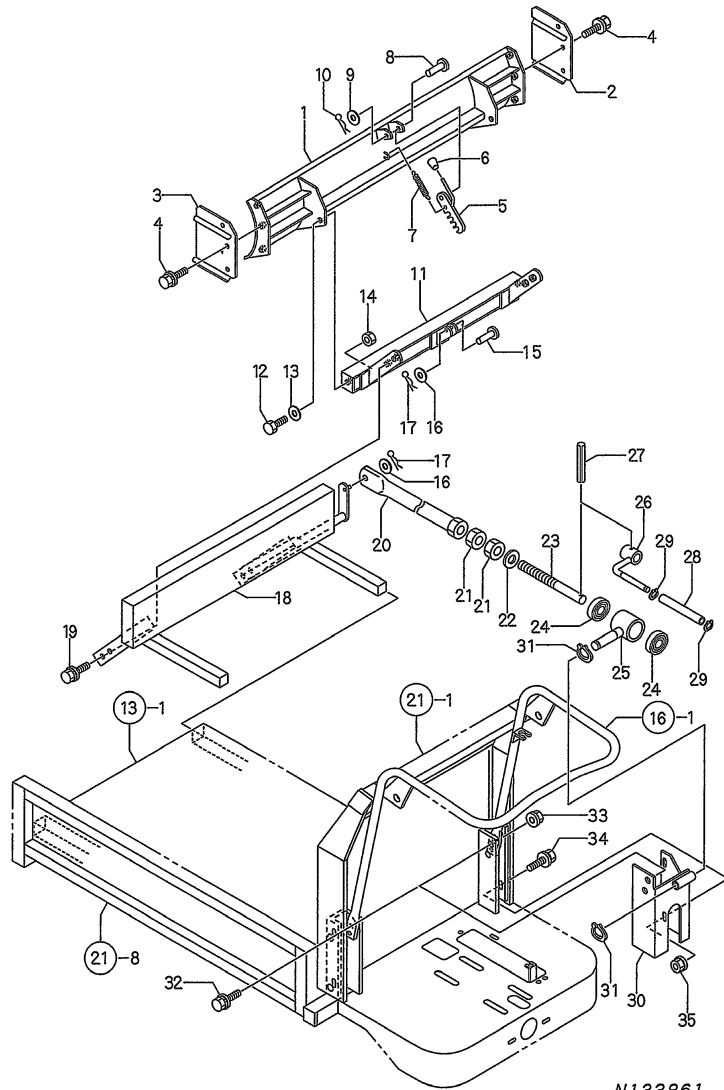
(A)=FT15-10F
(B)=
(C)=

(D)=
(E)=
(F)=



REF.	LEV.	PARTS NO.	DESCRIPTION	QTY						I	R
				(A)	(B)	(C)	(D)	(E)	(F)		
1	1	1N3560-26000	SHIFTER ROD	1							
2	1	1N3560-26010	SHIFTER,GEAR	1							
3	1	1N3510-26020	LEVER, SHIFT	1							
4	1	1N1150-25010	BALL 8,STEEL	1							
5	1	1N3530-25070	SPRING,FORK	1							
6	1	26717-100002	NUT M10	2							
7	1	1N1430-26030	WASHER,SEAL	2							
8	1	24311-000100	O-RING 1A P-10.0	1							

Fig.34. MULTI DOZER(ADD.ITEM)



N133861

Remarks
 * GROUP NO.23 EXCLUSIVE PARTS FOR
 MD8-FLBH
 OPTIONAL PARTS

(A)=MCG8
 (B)=MCG8-Q
 (C)=

(D)=
 (E)=
 (F)=

REF.	LEV.	PARTS NO.	DESCRIPTION	QTY						I	R
				(A)	(B)	(C)	(D)	(E)	(F)		
1	1	1N3560-67090	PLATE, SNOW DOZER	1							
2	1	1N1361-67350	PRATE A, GUIDE	1							
3	1	1N1361-67360	PLATE A, GUIDE	1							
4	1	26018-100252	BOLT M10X 25	6							
5	1	1N1361-67130	METAL, A LOCK	1							
6	1	1N1216-44010	GRIP	1							
7	1	1N1151-53000	SPRING 12.5X54, TENS.	1							
8	1	1N1460-42060	RIBET, 8X25	1							
9	1	22137-080000	WASHER 8, POLISHED	1							
10	1	22360-080000	SNAP PIN 8	1							
11	1	1N3560-67200	BRACKET, PLATE	1							
12	1	26117-120354	BOLT M12X 35 PLATED	2							
13	1	22137-120000	WASHER 12, POLISHED	2							
14	1	26757-120002	LOCK NUT M12 PLATED	2							
15	1	1N1215-66360	RIVET	1							
16	1	22137-100000	WASHER 10, POLISHED	2							
17	1	22360-100000	SNAP PIN 10	2							
18	1	1N3560-67000	LIFT ARM	1							
19	1	26018-100252	BOLT M10X 25	4							
20	1	1N3560-67180	PIPE, CONNECTING	1							
21	1	26757-200002	LOCK NUT M20 PLATED	2							
22	1	22137-200000	WASHER 20, POLISHED	1							
23	1	1N3560-67130	SCREW	1							
24	1	24520-512040	BEARING 51204	2							
25	1	1N3560-67240	FULCRUM, HANDLE	1							
26	1	1N3560-67270	HANDLE	1							
27	1	22351-060030	SPRING PIN 6X30	1							
28	1	1N3560-67300	HANDLE A	1							
29	1	1N3560-67310	RING, 12 RETAINING	2							
30	1	1N3560-67140	BRACKET	1							
31	1	22242-000200	CIRCLIP 20	2							
32	1	26018-100254	BOLT M10X 25	2							
33	1	26367-100002	U-NUT M10	2							
34	1	26018-060204	BOLT M 6X 20	2							
35	1	26367-060002	NUT M 6	2							

Part Number Index

All parts are stipulated in the order of part numbers.

(Depending on the area in which the part is used.)

This index will display the location of the part according to each part number.

PARTS No. INDEX

PARTS No.	Fig.	Ref.No.
106990-44660	7	22
114250-12300	5	14 -1
114250-21290	6	10
114270-01600	1	5
114770-61600	9	5
124060-77680	7	25
160110-92610	3	8
160110-92710	3	10
160120-76940	9	10
		21
160120-92700	3	9
160260-78700	7	26
160321-13770	5	15
160341-01950	10	25
160393-55050	7	10
160490-01330	2	4
160490-07120	3	4
160490-07130	3	4 -1
160490-11010	2	7
160490-11120	2	14
160490-11290	2	20
160490-11300	2	21
160490-11310	2	22
160490-12500	5	3
160490-12520	5	4
160490-13560	5	10
160490-13770	5	11 B
160490-13790	5	11 C-1
160490-14050	6	1
160490-14200	6	11
160490-14400	6	12
160490-22010	6	20
160490-22300	6	26
160490-23030	6	28
160490-45010	10	26 -1
160490-45110-1	10	1
160490-45140	10	1 -1
160490-45200	10	3
160490-45220	10	4
160490-45230	10	3 -1
160490-45240	10	38
160490-56011	8	1
160490-56590	8	10
160490-56600	8	11
160490-59350	7	23
160490-59360	7	24
160490-66020	9	12
160490-66190	9	25
160490-66200	9	28
160490-66211	9	29

PARTS No.	Fig.	Ref.No.
160490-76051	10	8
160490-76251	10	9
160490-76511	10	11
160490-76580	10	19
160490-76591	10	21
160490-76600	10	20
160490-76611	10	10
160490-78230	10	40
160490-78500	10	28
160490-78510	10	29
160490-78540	10	28 -1
160490-78550	10	29 -1
160491-56010	8	1 -1
160492-12050	5	2 -1
160492-56520	8	3
160492-56530	8	4
160492-56540	8	5
160492-56550	8	6
160492-56570	8	8
160492-56581	8	9
160492-56590	8	10 -1
160492-56600	8	11 -1
160492-56610	8	12
160492-56620	8	14
160492-56630	8	16
160492-66100	9	13
160495-56561	8	7
160495-56600	8	2
160498-01330	2	4 -1
160498-13570	5	10 -1
160498-14050	6	1 -1
160510-02220	1	8
		15
160510-03180	2	3
160510-13200	5	9
160510-14550	6	30
160510-56610	8	13
160510-56620	8	15
160520-03050	2	1
160520-07272	3	5
160520-07370	3	6
160520-66291	9	22
160525-45010	10	26
160530-21200	6	16
160590-21210	6	17
160610-03050	2	2
160610-04201	2	5
160610-04570	5	1
160610-04620	2	6
160610-12530	5	5

PARTS No.	Fig.	Ref.No.
160610-12540	5	6
160610-12550	5	7
160610-21290	6	18
160610-55100	7	11
160610-56630	8	17
160610-56900	8	25
160611-01740	1	19
160611-14560	6	9
160611-77250	10	23
160664-11100	2	12
160664-11110	2	13
160664-11180	2	15
160664-66220	9	19
160667-56150	8	26
160667-56160	8	27
160667-56750	8	22
160670-66350	9	20
160690-04610	5	1 -2
160690-07260	3	5 -1
160690-11200	2	16
160690-11220	2	17
160690-11221	2	17 -1
160690-11271	2	18
160690-11280	2	19
160690-61301	9	2
160690-61310	9	3
160690-61311	9	3 -1
160690-61450	9	4
160690-61600	9	6
160690-76531	10	13
160690-76540	10	14
160690-76561	10	15
160690-76570	10	16
160690-76580	10	17
160690-76801	10	12
160690-78020	10	32
160692-07250	3	3
160692-55300	7	13
160692-55421	7	19
160692-56620	8	25 A
160692-56710	8	19
160692-56760	8	25 B
160692-56770	8	23
160692-66051	9	14
160699-11200	2	16 -1
160700-78040	10	33
160700-78050	10	34
160700-78720	10	35
160708-55150	7	12
160710-55061	7	3

PARTS No.	Fig.	Ref.No.
160710-55360	7	15
160710-55370	7	16
160710-55381	7	17
160710-55382	7	17 -1
160710-55390	7	18
160710-56710	8	20
160762-12050	5	2
160769-56720	8	21
160790-04600	5	1 -1
160802-56480	8	2 -1
160810-21290	6	31
171008-03990	5	11 C
181130-56640	8	18
181230-56380	8	24
183730-07440	3	7
1A2100-86500	4	2
	23	11
1A2260-87100	4	1
	23	13
1C6700-85650	23	9
1C6700-85670	23	10
1E4490-51701	20	1 -1
1E5120-86720	4	3
	23	12
1N1070-91010	24	1
1N1070-91020	24	3
1N1070-91050	24	2
1N1070-91090	24	4
1N1070-93050	22	1
	33	1
1N1091-36000	14	8
1N1101-44010	19	2
1N1150-25010	32	4
1N1151-53000	34	7
1N1151-53020	21	9
1N1210-53030	17	10
1N1215-66360	34	15
1N1216-44010	34	6
1N1240-21040	12	4
1N1291-22030	11	3
1N1291-24030	25	15
1N1291-24070	25	14
1N1291-25120	29	6
1N1291-25150	29	10
1N1291-25160	29	11
	29	12 -1
1N1291-25180	29	13
1N1291-25200	29	18
1N1291-25220	30	4
1N1291-25230	30	6

PARTS No. INDEX

PARTS No.	Fig.	Ref.No.
1N1291-25240	30	8
1N1291-35020	15	15
1N1291-58080	13	3
	16	4
	19	5
	21	4
1N1296-25050	31	1
1N1296-25070	31	3
1N1313-93160	23	4
1N1360-22090	18	1
1N1361-67130	34	5
1N1361-67350	34	2
1N1361-67360	34	3
1N1383-93190	23	3
1N1430-24080	25	13
1N1430-26030	32	7
1N1460-42060	34	8
1N1520-53020	21	3
1N3500-93040	33	15
1N3500-93120	22	2
1N3501-35030	15	11
1N3503-25180	31	1 -1
1N3503-93310	33	17
1N3506-93260	33	2
1N3506-93270	33	3
1N3506-93300	33	5
1N3506-93310	33	6
1N3507-93160	33	4
1N3510-24050	25	12
1N3510-24060	25	7
1N3510-25000	26	1
1N3510-25010	26	2
1N3510-25030	27	2
1N3510-25040	27	3
1N3510-25050	27	4
1N3510-25070	27	6
1N3510-25080	27	7
	28	4
1N3510-25090	27	1
1N3510-25120	28	2
1N3510-25170	28	5
1N3510-25270	29	14
1N3510-25310	31	2
1N3510-25320	31	6
1N3510-25330	26	5
1N3510-25350	29	3
1N3510-25360	29	4
1N3510-25380	29	9
1N3510-25390	29	15
1N3510-25400	30	1

PARTS No.	Fig.	Ref.No.
1N3510-26020	32	3
1N3510-42070	18	5
1N3510-42090	11	8
1N3520-22070	12	9
1N3530-24060	25	16
1N3530-24070	25	19
1N3530-25020	27	5
1N3530-25030	28	3
1N3530-25070	32	5
1N3530-25080	28	1
1N3544-93130	23	1
1N3544-93140	23	2
1N3544-93170	23	5
1N3544-93180	23	6
1N3544-93200	23	7
1N3544-93210	23	8
1N3544-93310	33	10
		10 -1
1N3544-93320	33	11
		11 -1
1N3544-93330	33	12
		12 -1
1N3544-93340	33	13
		13 -1
1N3544-93350	33	14
		14 -1
1N3544-93360	33	16
		16 -1
1N3560-14010	12	14
1N3560-21000	12	1
1N3560-21010	12	3
1N3560-22000	11	1
1N3560-22001	11	1 -1
1N3560-24000	25	18
1N3560-24010	25	17
1N3560-24030	25	1
1N3560-24040	25	2
1N3560-24050	25	3
1N3560-24060	25	4
1N3560-24070	25	5
1N3560-25000	29	1
1N3560-25010	29	2
1N3560-25020	29	7
1N3560-25030	29	12
1N3560-26000	32	1
1N3560-26010	32	2
1N3560-31000	13	7
1N3560-35010	14	4
1N3560-35020	15	14
1N3560-35030	14	3

PARTS No.	Fig.	Ref.No.
1N3560-35060	15	10
1N3560-37000	14	14
1N3560-37010	14	11
1N3560-41000	19	1
1N3560-41020	19	4
1N3560-42000	17	1
1N3560-42040	17	4
1N3560-47000	16	1
1N3560-51000	17	7
1N3560-51010	20	1
1N3560-51020	20	5
1N3560-51021	20	5 -1
1N3560-51030	16	6
1N3560-51050	20	2
1N3560-51060	20	3
1N3560-53000	19	7
1N3560-58000	13	8
1N3560-58030	12	7
1N3560-58040	13	4
1N3560-58060	21	2
1N3560-65000	21	7
1N3560-65040	21	8
1N3560-65050	21	11
1N3560-65070	21	1
1N3560-67000	34	18
1N3560-67090	34	1
1N3560-67130	34	23
1N3560-67140	34	30
1N3560-67180	34	20
1N3560-67200	34	11
1N3560-67240	34	25
1N3560-67270	34	26
1N3560-67300	34	28
1N3560-67310	34	29
1N3560-93010	22	3
1N3560-93020	22	4
1N3560-93030	22	5
1N3560-93040	22	6
		6 -1
	33	8
		8 -1
1N3560-93050	22	7
	33	9
1N3560-93110	22	8
1N3560-93160	33	7
1N3560-93180	22	9
1N3560-95000	24	5
1N3560-95101	24	7
1N3560-95150	24	6
1N3561-25040	31	2 -1

PARTS No.	Fig.	Ref.No.
1N3561-36000	15	10 -1
1N3563-93020	33	18
1N3563-93050	33	19
760490-01500	1	10
760490-01561	1	1
760490-01562	1	1 -1
760490-21700	6	13
760490-22500	6	22
760490-55700	7	1
7N1291-25000	30	7
7N1291-25010	30	9
7N3560-31000	13	1
7N3560-35000	14	2
7N3560-35010	15	1
7N3560-35020	14	1
7N3560-36000	15	1 -1
7N3560-58000	13	2
7N3560-65000	21	6



YANMAR CO.,LTD.